

A.J.S. Motor Cycles

1929
LIST OF
SPARE PARTS
FOR
All Models.

1st EDITION.

A. J. Stevens & Co. (1914) Ltd.

WOLVERHAMPTON,

TELEPHONE. 1731
(Five Lines.)

CODES. TELEGRAMS.
A.B.C. 5th Edition. "HOPIT, Wolverhampton."
A.B.C. 6th Edition.
Bentley's.
Marconi International

Price 2/6

1929 SPARE PARTS LIST.

INSTRUCTIONS TO BE OBSERVED.

(1) All correspondence and parcels must be addressed to the firm,
at our Head Offices as below, and not to individuals:

Messrs. A. J. STEVENS & Co. (1914) Ltd.,
GRAISELEY HOUSE,
WOLVERHAMPTON.

It will greatly facilitate prompt attention to Clients' correspondence or requirements if letters or goods are addressed, in addition, to the department concerned. By observing this simple rule the execution of orders will be greatly expedited.

(2)

Departments.

THE MAIN DEPARTMENTS ARE AS FOLLOWS :—

New Machines	...	Sales Department.
New Machines for Export	...	Export Sales Department.
Repairs, Overhauls or Replace-ments of Parts under Guarantee		Repair Department.
Spare Parts	...	Spare Parts Department.
Spare Parts for Export	...	Export Spare Parts Department.
Accounts	...	Accounts Department.

(3)

Posting of Orders.

The earlier letters and orders are posted the better. Unless such arrive for delivery here early in the day, it is impossible to ensure despatch of reply or goods by return of post.

(4)

Accessories
to fitted.

We have decided to cease stocking Spares for Magdynos, Magnetos, Lamps, Horns, etc., and all Carburettor Controls and Parts. With each machine we supply a copy of the Spares List issued by the makers of these Parts. We advise Clients to obtain their requirements from the nearest A.J.S. Service Dealer or direct from the Makers of these articles.

(5)

Instructions for
and Labelling
of Parts sent to
Works
and for Estimates.

Parts sent to us to be repaired, replaced or as patterns, should bear distinctly the sender's full name and address, and explicit instructions should be sent by the same post in a separate letter of advice stating specifically what is required. We are sometimes asked by Clients when sending their Engines or Motor Cycles, etc., for repairs or overhauls to furnish an **Estimate** for the necessary work. We are pleased to do this on the distinct understanding that we reserve the right to charge for any extra work or new parts found necessary to put such machine or engine, etc., in good running order, which it may have been impossible to detect when dismantling. We prefer not to undertake a repair or overhaul (nor do we accept any responsibility) when the estimate for same has been curtailed by the owner. If an estimate is not accepted after tender, a charge is made for taking down, re-assembling and preparing the estimate.

(6)

Return of
Old Parts.

It is **Important** that we should be instructed if old parts are required to be returned, as they cannot be held in reserve at our works beyond **seven days** from date of completion of order.

(7)

Removal of all
Accessories from
Machines.

When forwarding a complete Motor Cycle, do not fail to remove all accessories, such as lamp, horn, tools, badges, etc., otherwise we cannot be held responsible for their safe return, although we take every possible precaution in this respect.

(8)

Carriage and
Packing Charges.
Rail and Post.

All goods sent as patterns or for repairs must be consigned **Carriage Paid** or we cannot accept delivery of same. All rail goods returned by us will be sent **passenger train** unless other instructions are received. Packing Boxes, Grates, etc., are charged at cost, and are strictly **Non-Returnable**.

All goods to Spares Orders, where the maximum weight is under 1-lb. are sent per letter post (unless specified otherwise) in order to curtail postage expenses as much as possible since these are borne by the Client. No claim, however, can be made on the Post Office if a parcel is lost when sent by letter post.

(9)

Registration of
Letters containing
Money.

In treasury notes or coin is remitted. **Do not** to **Register the Letter**, as otherwise we do not accept responsibility for the correct amount reaching us.

(10)

Money
in Parcels.

Please do not enclose cheques or money of any kind in parcels sent to the Company. All payments should be made through separate post and the amount stated in letter. We accept no responsibility for loss if money is enclosed in parcels.

(11)

Terms,
Cheques,
Deposit
Accounts.

Our terms are strictly **Nett Cash** with order, or cash against **Pro Forma Invoice**. All cheques and postal orders must be made payable to A.J. Stevens & Co. (1914) Ltd., and **Crossed**. If the amount remitted is in excess of cost, the balance will be returned. If customers desire a Deposit Account can be opened.

(12)

C.O.D.
System.

We prefer not to send goods by the Cash on Delivery System. C.O.D. orders cannot be executed with such speedy despatch as other orders, owing to the extra time involved in making out the various official forms, special labels, etc., as required by the Postmaster General.

(13)

Telegraphic
Orders.

If Parts are urgently wanted and it is necessary to send us a telegram do not fail to include **Full Name and Full Address** in the message. Unless this is done the Post Office do not give this information in the telegram. The omission of this information necessitates the goods being held back until confirmation is received by post. Orders or instructions received by telegram or over the phone must be confirmed by letter enclosing remittance.

(14)

Loss in Transit.

In the event of loss or damage to goods when in transit whether sent letter post, parcel post, or rail, we hold no responsibility whatever, and all claims for compensation must be made by Clients direct to the Post Office or Railway Authorities.

(15)

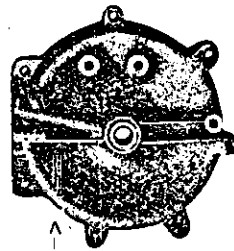
Despatch of
Goods.

Every effort is made to despatch goods ordered by return, but if the works are temporarily out of stock of certain items, the whole order is held back until we can execute in full, unless instructions to the contrary are given by Clients on their order.

List of 1929 Models.

Model M1	De Luxe Passenger Combination	...	9.96 h.p.
Model M2	Standard Passenger Combination	...	9.96 h.p.
Model M3	De Luxe Side Valve Touring Machine	...	3.49 h.p.
Model M4	De Luxe Side Valve Sporting Machine	...	3.49 h.p.
Model M5	Standard Side Valve Sporting Machine	...	3.49 h.p.
Model M6	Overhead Valve Machine	...	3.49 h.p.
(This Model is also supplied with Two Port Exhaust.)			
Model M7	Overhead Camshaft Machine	...	3.49 h.p.
Model M8	Overhead Valve Machine	...	4.98 h.p.
(This Model is also supplied with Two Port Exhaust.)			
Model M9	De Luxe Side Valve Touring Machine...	...	4.98 h.p.
Model M10	Overhead Camshaft Machine	...	4.98 h.p.
Model M12	Lightweight Machine	...	2.48 h.p.

When the Model is in doubt quote Engine Number stamped on Brass Plate on the driving side of Crankcase. (See illustration below).



Brass Plate

The Prices given in this Catalogue are subject to alteration without notice, and we reserve the right to charge for all Parts supplied at prices ruling at time of delivery.

A. J. STEVENS & CO. (1914) LTD.

DECEMBER, 1928.

Explanation of Numbering System.

A new system of numbering Spare Parts is being commenced in this List. This is based on the use of an Initial Letter which differs with the various sections in the book, and a second letter which will change each year in the case of an entirely new Part, thus definitely denoting the year.

In cases where Parts are **New** this year, new numbers are allotted. When Parts are **Old**, but are used on additional models this year, new numbers are allotted, but only in the columns where the use is **New**.

In the last column on the descriptive pages (marked "For Dealer's Use,") the letter "O" (meaning "Old") will be found against certain Parts. This letter indicates that these Parts were used on 1928 or earlier models.

The figures in the first column (headed Illustration Number) refer to the illustrations and must **Not** be used for ordering. The letters "N.I." indicate that the Part is not illustrated.

The Engine Numbers used on 1929 Models commence

approximately as follows:—

M1	61140—
M2	45988—46000
			50126—
M3	68726—
M4	125671—
M5	113526—
M6	103288—103312
			103563—
M7	46775—
M8	93406—93430
			94681—
M9	130151—
M10	120072—120100
			89620—89752
M12	122851—

WIDE RATIO.
9.96-h.p., 4.98-h.p. Gear Ratio Chart, M1, M2, M8, M9.

Engine Sprocket.	Top Gear.	Second Gear.	Bottom Gear.
15	6.239	11.230	20.375
16	5.849	10.528	19.098
17	5.505	9.909	17.975
18	5.199	9.358	16.976
19	4.925	8.866	16.092
20	4.679	8.422	15.278
21	4.456	8.021	14.551
22	4.254	7.657	13.889
23	4.069	7.324	13.286

WIDE RATIO.
3.49-h.p. Gear Ratio Chart, M3, M4, M5.

Engine Sprocket.	Top Gear.	Second Gear.	Bottom Gear.
15	7.733	13.024	19.798
16	7.250	12.210	18.560
17	6.823	11.492	17.468
18	6.444	10.854	16.498
19	6.105	10.279	15.629
20	5.800	9.768	14.848
21	5.524	9.303	14.141
22	5.273	8.880	13.498
23	5.043	8.494	12.911
24	4.833	8.140	12.373

CLOSE RATIO.
4.98-h.p. Gear Ratio Chart, M8, M9, M10.

Engine Sprocket.	Top Gear.	Second Gear.	Bottom Gear.
15	6.239	7.552	12.273
16	5.849	7.080	11.506
17	5.505	6.664	10.829
18	5.199	6.293	10.227
19	4.925	5.962	9.684
20	4.679	5.664	9.204
21	4.456	5.395	8.766
22	4.254	5.145	8.368
23	4.069	4.925	8.004

CLOSE RATIO.
3.49-h.p. Gear Ratio Chart, M6, M7.

Engine Sprocket.	Top Gear.	Second Gear.	Bottom Gear.
15	7.733	9.497	14.536
16	7.250	8.903	13.627
17	6.823	8.379	12.826
18	6.444	7.914	12.113
19	6.105	7.497	11.476
20	5.800	7.123	10.902
21	5.524	6.783	10.383
22	5.273	6.475	9.911
23	5.043	6.193	9.480
24	4.833	5.935	9.035

Whe.	Ordering	Quote	Description	and Part	Number	from

Correct Column for your Horse Power and Model.

Illustration No.	DESCRIPTION OF PART.	Price, \$ & c.	9.36 h.p.	3.49 h.p.	4.98 h.p.	2.48 h.p.
11	Crank Pin, complete with Race and Roller Bearings	17 9	..	ZA1040
	Crank Pin, complete with Race and Roller Bearings	17 9	ZA1060	..
	Crank Pin, complete with Race and Roller Bearings	13 6	F11
	Crank Pin only, less Nuts	8 9	ZA1100
	Crank Pin only, less Nuts	7 0	..	H44-1	G4-1	..
	Crank Pin only, less Nuts	7 0	..	ZA1140
	Crank Pin only, less Nuts	7 0	ZA1160	..
	Crank Pin only, less Nuts	6 3	F12
	Crank Pin Thrust Washer	9	K55	H44-2	G5-1	..
	Crank Pin Thrust Washer	9	..	ZA1220	ZA1220	..
	Crank Pin Thrust Washer	9	F15
12	Crank Pin Nut, $\frac{3}{4}$ x 20 x $\frac{1}{2}$ x 1	3	K54	H45	G5	F13
	Crank Pin Nut, $\frac{3}{4}$ x 20 x $\frac{1}{2}$ x 1 $\frac{1}{2}$	3	..	ZA1270	ZA1270	..
	Crank Pin Roller (set of 70 for Twin, set of 35 for other models)	6 4 2 2	ZA1280	H48-1	G9-1	..
	Crank Pin Roller (set of 28)	2 9	F14
13	Gudgeon Pin ..	3 6	ZA1320	..	G11	..
	Gudgeon Pin ..	2 0	..	H52
	Gudgeon Pin ..	1 9	F16
	Gudgeon Pin Ring	3	ZA1380	..	G13	..
14	Gudgeon Pin Ring	3	..	H55
	Gudgeon Pin Ring	3	F17
	Piston, complete with Gudgeon Pin, Rings, etc. (Low Compression)	1 4 9	ZA1440	..	G14-6	..
	Piston, complete with Gudgeon Pin, Rings, etc. (Low Compression)	1 0 9	..	ZA1460
15	Piston, complete with Gudgeon Pin, Rings, etc. (Low Compression)	1 1 0	..	H67-1
	Piston, complete with Gudgeon Pin, Rings, etc. (Low Compression)	1 1 0	..	ZA1500
	Piston, complete with Gudgeon Pin, Rings, etc. (Low Compression)	1 4 9	G14-5	..
	Piston, complete with Gudgeon Pin, Rings, etc. (Low Compression)	1 4 9	ZA1540	..

Engine—Continued.

NOTE
When
Indicates models for which Part is suitable.
occurs in more than one column in same line part is interchangeable

MODELS

[illegible]

NOTE Indicates models for which Part is suitable. When occurs in more than one column in same line Part is interchangeable:

Correct Column for your Horse Power and Model.

Illustration No.	DESCRIPTION OF PART.	Price, \$ s. d.	9.96 h.p. 3.49 h.p.	4.98 h.p. 3.49 h.p.
15	Piston, complete with Gudgeon Pin, Rings, etc. (Low Compression)	17 9	F18
	Piston, complete with Gudgeon Pin, Rings, etc. (High Compression)	1 0 0	ZA1580	..
	Piston, complete with Gudgeon Pin, Rings, etc. (High Compression)	1 0 0	ZA1600	..
	Piston, complete with Gudgeon Pin, Rings, etc. (High Compression)	1 4 9	ZA1620
	Piston, complete with Gudgeon Pin, Rings, etc. (High Compression)	1 3 9	ZA1640
	A Special High Compression Piston for M7 and Moto Models can be supplied for Sprint Races only. These Pistons are quite unsuitable for any other purpose.			
	Piston Body only (Low Compression) at A-14 in., at B-31 in.	17 3	ZA1660	G15-6
	Piston Body only (Low Compression) at A-13 16 in., at B-31 32 in.	15 0	ZA1680	..
	Piston Body only (Low Compression) at A-13 16 in., at B-2 61 64 in.	15 0	H81-1	..
	Piston Body only (Low Compression) at A-13 16 B-2 61 64	17 3	ZA1720	..
16	Piston Body only (Low Compression) at A-21 32 in., at B-3 5 64 in.	17 3	G15-5
	Piston Body only (Low Compression) at A-37 64 in., at B-3 5 64 in.	17 3	ZA1760
	Piston Body only (Low Compression) at A-11 32 in., at B-3 1 10 in.	12 0	F19
	Piston Body only (High Compression) at A-13 16 in., at B-3 7 32 in.	15 0	ZA1800	..
	Piston Body only (High Compression) at A-13 16 in., at B-3 9 64 in.	15 0	ZA1820	..
	Piston Body only (High Compression) at A-37 64 in., at B-3 17 64 in.	17 3	ZA1840
	Piston Body only (High Compression) at A-37 64 in., at B-3 11 32 in.	17 3	ZA1860
	A Special High Compression Piston for M7 and Moto models can be supplied for Sprint Races only. These Pistons are quite unsuitable for any other purpose.			
	PISTON DIMENSIONS.—'A' is the distance from the bottom of the Gudgeon Pin Hole to the Skirt measured at right angles.			
	'B' is the maximum overall height of the piston.			
17	All 1929 Pistons are fitted with three rings at the top and one at the bottom.			
	Piston Rings .. each...	11	ZA1880	G16
	Piston Rings .. each...	11	H85	..
	Piston Rings .. each...	11	F20
	Valve, complete with Springs, etc.	5 6	K85	H86
	Valve, complete with Springs, etc.	11 9	ZA1960	ZA1960
	Valve, complete with Springs, etc.	14 9	ZA1980

Engine—Continued.

A Special High Compression Piston for M7 and M10 models can be supplied for Sprint Races only. These "Pistons" are quite unsuitable for any other purpose.

PISTON DIMENSIONS:—"A" is the distance from the bottom of the Gudgeon Pin Hole to the Skirt measured at right angles. "B" is the maximum overall height of the piston.

the piston.

All 1929 Pistons are fitted with three at the top and one at the bottom.

Piston Rings

.. .. .

Piston Rings

Piston Rings

Dispositivos

Piston Rings

Valve complete with Springs etc

...studies with adolescents, etc.

Valve convolutes with Springs etc

valve, complete with springs, etc.

Value accounts with Surplus etc

Active, complete with springs, etc.

This scan is explicit for non-commercial use and is not intended for financial or material gain by anyone

When ordering Quote Description and Part Number from

Correct Column for your Horse Power and Model.

Illustration No.	DESCRIPTION OF PART.	Price, \$ s. d.	9.96 h.p.	3.49 h.p.	4.98 h.p.	2.48 h.p.
28	Valve Cap Washer	2	K96	H120	G22-4	..
	Valve Cap Washer	2	F30
29	Exhaust Lifter Lever (R.H. Long)	1 0	K98
	Exhaust Lifter Lever (L.H. Long)	1 0	K100
30	Exhaust Lifter Lever (R.H. Short)	7	K103
	Exhaust Lifter Lever (L.H. Short)	7	K106
31	Exhaust Lifter Lever, 31 or 4 long..	1 3	..	ZA2640	ZA2640	ZA2640
	NOTE—State length when ordering.
32	Exhaust Lifter Lever	2 9	..	H123-1	G26-1	..
	Spindle for Exhaust Lifter Lever ..	7	K108
33	Spindle for Exhaust Lifter Lever ..	3 3	..	ZA2700	ZA2700	ZA2700
	Nut for Exhaust Lifter Lever Spindle $\frac{1}{4}$ x 20 x 3/16 x 7/16	1	K110	H133	G27-1	F34
34	Washer for Exhaust Lifter Lever, $\frac{1}{4}$ Plain	1	K111	H134	G27-2	F35
	Pin for Exhaust Lifter Lever, 3/16 x 7/16 x 32	4	..	H123-2	G26-2	..
35	Return Spring for Exhaust Lifter Lever ..	3	K113
	Return Spring for Exhaust Lifter Lever ..	3	..	H129	G101	F32
N.I.	Bush for Exhaust Lifter Spindle ..	10	K112
	Pin for Exhaust Lifter Cable, $\frac{1}{4}$ x 3 x 26 (Plated)	6	..	ZA2780	ZA2780	ZA2780
36	Nut for Pin, $\frac{1}{4}$ x 26 x 1 x 7/16 (Plated)	2	..	YA4380	YA4380	YA4380
	Washer for Pin, $\frac{1}{4}$ Single Spring ..	1	..	MA500	MA500	MA500
37	Exhaust Valve Tappet Rod (Front or Rear Cylinder)	4 0	K116
	Exhaust Valve Tappet Rod	4 6	..	H137-1
38	Exhaust Valve Tappet Rod	4 6	..	ZA2850	ZA2850	..
	Exhaust Valve Tappet Rod	4 0	G29-5	..
39	Exhaust Valve Tappet Rod	4 6	F36
	Exhaust Valve Tappet Rod Locknut 5/16 x 26 x 9 32 x 1	7	K117
N.I.	Exhaust Valve Tappet Rod Locknut 5/16 x 26 x 3/16 x 17/32	2	..	H144	G32	F37
	Intet Valve Tappet Rod (Front)	3 3	K123

Engine—Continued.

Valve Cap Washer

Valve Cap Washer

Exhaust Lifter Lever (R.H. Long)

Exhaust Lifter Lever (L.H. Long)

Exhaust Lifter Lever (R.H. Short)

Exhaust Lifter Lever (L.H. Short)

Exhaust Yifter Lever. 36 or 4 long..

Exhaust I after I ever

Exhaust Lifter Lever

Kindle for Exhilarated Lifter Lover

What's the Best Time to Lift? Ever Spind!

viz--how far Exhaust Tifter Tower

Dr. J. H. Fulkerson

Catalogue for Export List I

1. Legislative

offering a 20% discount to the

THE

... and the ...

• 500

1
2
3
4
5
6
7
8
9
10
11
12
13
14
15
16
17
18
19
20
21
22
23
24
25
26
27
28
29
30
31
32
33
34
35
36
37
38
39
40
41
42
43
44
45
46
47
48
49
50
51
52
53
54
55
56
57
58
59
60
61
62
63
64
65
66
67
68
69
70
71
72
73
74
75
76
77
78
79
80
81
82
83
84
85
86
87
88
89
90
91
92
93
94
95
96
97
98
99
100
101
102
103
104
105
106
107
108
109
110
111
112
113
114
115
116
117
118
119
120
121
122
123
124
125
126
127
128
129
130
131
132
133
134
135
136
137
138
139
140
141
142
143
144
145
146
147
148
149
150
151
152
153
154
155
156
157
158
159
160
161
162
163
164
165
166
167
168
169
170
171
172
173
174
175
176
177
178
179
180
181
182
183
184
185
186
187
188
189
190
191
192
193
194
195
196
197
198
199
200
201
202
203
204
205
206
207
208
209
210
211
212
213
214
215
216
217
218
219
220
221
222
223
224
225
226
227
228
229
230
231
232
233
234
235
236
237
238
239
240
241
242
243
244
245
246
247
248
249
250
251
252
253
254
255
256
257
258
259
260
261
262
263
264
265
266
267
268
269
270
271
272
273
274
275
276
277
278
279
280
281
282
283
284
285
286
287
288
289
290
291
292
293
294
295
296
297
298
299
300
301
302
303
304
305
306
307
308
309
310
311
312
313
314
315
316
317
318
319
320
321
322
323
324
325
326
327
328
329
330
331
332
333
334
335
336
337
338
339
340
341
342
343
344
345
346
347
348
349
350
351
352
353
354
355
356
357
358
359
360
361
362
363
364
365
366
367
368
369
370
371
372
373
374
375
376
377
378
379
380
381
382
383
384
385
386
387
388
389
390
391
392
393
394
395
396
397
398
399
400
401
402
403
404
405
406
407
408
409
410
411
412
413
414
415
416
417
418
419
420
421
422
423
424
425
426
427
428
429
430
431
432
433
434
435
436
437
438
439
440
441
442
443
444
445
446
447
448
449
450
451
452
453
454
455
456
457
458
459
460
461
462
463
464
465
466
467
468
469
470
471
472
473
474
475
476
477
478
479
480
481
482
483
484
485
486
487
488
489
490
491
492
493
494
495
496
497
498
499
500
501
502
503
504
505
506
507
508
509
510
511
512
513
514
515
516
517
518
519
520
521
522
523
524
525
526
527
528
529
530
531
532
533
534
535
536
537
538
539
540
541
542
543
544
545
546
547
548
549
550
551
552
553
554
555
556
557
558
559
560
561
562
563
564
565
566
567
568
569
570
571
572
573
574
575
576
577
578
579
580
581
582
583
584
585
586
587
588
589
590
591
592
593
594
595
596
597
598
599
600
601
602
603
604
605
606
607
608
609
610
611
612
613
614
615
616
617
618
619
620
621
622
623
624
625
626
627
628
629
630
631
632
633
634
635
636
637
638
639
640
641
642
643
644
645
646
647
648
649
650
651
652
653
654
655
656
657
658
659
660
661
662
663
664
665
666
667
668
669
670
671
672
673
674
675
676
677
678
679
680
681
682
683
684
685
686
687
688
689
690
691
692
693
694
695
696
697
698
699
700
701
702
703
704
705
706
707
708
709
710
711
712
713
714
715
716
717
718
719
720
721
722
723
724
725
726
727
728
729
730
731
732
733
734
735
736
737
738
739
740
741
742
743
744
745
746
747
748
749
750
751
752
753
754
755
756
757
758
759
760
761
762
763
764
765
766
767
768
769
770
771
772
773
774
775
776
777
778
779
780
781
782
783
784
785
786
787
788
789
790
791
792
793
794
795
796
797
798
799
800
801
802
803
804
805
806
807
808
809
810
811
812
813
814
815
816
817
818
819
820
821
822
823
824
825
826
827
828
829
830
831
832
833
834
835
836
837
838
839
840
84

Судья

5'10 x 20 x 9 3/2 x 1

5:16 x 26 x 3:16 x 1/132

Inlet Valve Tapper Rod (F1011)

NOTE
When
Indicates models for which Part is suitable.
Occurs in more than one column in same line Part is interchangeable

MODELS

[illegible]

This scan is explicit for non-commercial use and is not intended for financial or material gain by anyone

Ordering	Quote Description and Part Number from
W1	

Correct Column for your Horse Power and Model.

Illustration No.	DESCRIPTION OF PART.	Price, £ s. d.	9.96 h.p.	3.49 h.p.	4.98 h.p.	2.48 h.p.
35	Engine—Continued.					
	Inlet Valve Tappet Rod (Rear) ..	3 6	K120
	Inlet Valve Tappet Rod (same as K120)	3 6	..	H141-I
	Inlet Valve Tappet Rod ..	3 6	..	ZA3110	ZA3110	..
	Inlet Valve Tappet Rod ..	4 0	G25-5	..
N.I.	Inlet Valve Tappet Rod ..	3 6	F38
	Inlet Valve Tappet Rod Locknut .. 5/16 x 26 x 3/16 x 17/32	2	K124	H144	G32	F37
	Tappet Top (Inlet) ..	10	ZA3190
	Tappet Top (Exhaust) ..	10	ZA3210
	Tappet Top (Inlet or Exhaust) ..	10	..	H145-1	..	F39
36	Tappet Top (Inlet or Exhaust) ..	11	G31-2	..
	Tappet Stud in Crankcase ..	3	K129
	Tappet Stud in Crankcase ..	3	..	H149	G30	F40
	Tappet Guide (Exhaust) (Front or Rear) ..	3 6	ZA3310
	Tappet Guide (Exhaust) ..	2 9	..	ZA3330	ZA3330	..
37	Tappet Guide (Exhaust) ..	3 6	ZA3350	..
	Tappet Guide (Exhaust) ..	2 9	ZA3370
	Tappet Guide (Inlet) Front ..	3 3	ZA3390
	Tappet Guide (Inlet) Rear ..	2 9	ZA3410
	Tappet Guide (Inlet) ..	3 3	..	ZA3430	ZA3430	..
38	Tappet Guide (Inlet) ..	3 6	ZA3450	..
	Tappet Guide (Inlet) ..	2 9	ZA3470
	Tappet Guide Nut (Exhaust) (Front or Rear) ..	1 9	ZA3490
	Tappet Guide Nut (Inlet) (Front or Rear) ..	1 3	ZA3510
	Tappet Guide Nut (Inlet and Exhaust) ..	1 3	..	ZA3530
39	Tappet Guide Nut (Inlet and Exhaust) ..	1 3	..	ZA3550	ZA3550	..
	Tappet Guide Nut (Inlet and Exhaust) ..	1 9	ZA3570	..
	Tappet Guide Nut (Inlet and Exhaust) ..	1 3
	Tappet Guide Nut (Inlet and Exhaust) ..	1 3
	Tappet Guide Nut (Inlet and Exhaust) ..	1 3

Engine—Continued.

Inlet Valve Tappet Rod (Rear) ..
Inlet Valve Tappet Rod (same as K120)

cod

五

36

37

38

39

•

When
NOLF
Indicates models for which Part is suitable.
occurs in more than one column in same line Part is interchange:

MODELS

[illegible]

•

W.	Ordering	Quote	Description	and Part	Number	from

Correct Column for your Horse Power and Model.

Illustration No.	DESCRIPTION OF PART.	Price, $\frac{\text{p.}}{\text{z}}$ & d.	9.96 h.p.	3.49 h.p.	4.98 h.p.	2.48 h.p.
	Engine—Continued.					
	Crankcase Half, with Bushes (Driving Side)...	1 13 0	ZA4103	..
42	Crankcase Half, with Races (Driving Side) ..	2 3 3	ZA4120	..
	Crankcase Half, with Bushes (Driving Side) ..	1 5 9	ZA4140
	+ NOTE—Crankcase Halves are not supplied separately.					
	Paper Washer for Crankcase ..	3	ZA4160
	Paper Washer for Crankcase ..	3	..	ZA4170
	Paper Washer for Crankcase ..	3	ZA4180	..
	Paper Washer for Crankcase ..	3	ZA4190	..
	Paper Washer for Crankcase ..	3	ZA4200
	Timing Cover only, with Bushes ..	1 0 6	ZA4210
	Timing Cover only, with Bushes ..	8 0	..	ZA4230	ZA4280	..
43	Timing Cover only, with Bushes ..	7 0	ZA4250
	+ NOTE—Not supplied separately from Crankcase.					
	Paper Washer for Timing Cover ..	3	ZA4270
	Paper Washer for Timing Cover ..	3	..	ZA4280	ZA4280	..
	Paper Washer for Timing Cover ..	3	ZA4290
	O.H.C. Chain Cover ..	17 3	..	H249-2
	O.H.C. Chain Cover ..	17 3	G71-5	..
	O.H.C. Chain Cover Fabric ..	1 9	..	H249-3
	O.H.C. Chain Cover Fabric ..	1 9	G71-6	..
	Rivets for Fabric .. doz.	4	..	H249-4	G71-7	..
	O.H.C. Chain Cover Cap ..	14 3	..	H249-5
	O.H.C. Chain Cover Cap ..	14 3	G71-8	..
	Pins for Chain Cover (Long) .. each	6	..	H249-6	G71-9	..
	5 16 x 1-9 16 x 20 Round Head					
	Pins for Chain Cover (Short) .. each.	3	..	H249-7	G71-10	..
	5 16 x 1-3 16 x 20 Round Head					
	Timing Cover Pins (Long) ..	3	ZA4450	ZA4450	ZA4450	..
	1" O" B.A. x 1-3 16 Hex. Head					
	Timing Cover Pins (Short) ..	2	ZA4460	ZA4460	ZA4460	ZA4460
	1" O" B.A. x 1 1/16 Hex. Head					
	Timing Cover Pins (Cheese Head) ..	2	ZA4470	ZA4470	ZA4470	ZA4470
	1" O" B.A. x 1 1/8 Round Head					
	Magneto Chain Cover Pin (Long) ..	3	ZA4480	ZA4480	ZA4480	ZA4480
	1" O" B.A. x 1 1/2 Hex. Head					

Engine—Continued.

Crankcase Half, with Bushes (Driving Side)...	1	13	0			ZA4100
Crankcase Half, with Races (Driving Side)	2	3	3			ZA4120
Crankcase Half, with Bushes (Driving Side). NOTE—Crankcase Halves are not supplied separately.	1	5	9			ZA4140
Paper Washer for Crankcase	3				ZA4160	
Paper Washer for Crankcase	3				ZA4170	
Paper Washer for Crankcase	3					ZA4180
Paper Washer for Crankcase	3					ZA4190
Paper Washer for Crankcase	3					ZA4200
Timing Cover only, with Bushes	1	0	6		ZA4210	
Timing Cover only, with Bushes	8	0				ZA4230
Timing Cover only, with Bushes NOTE—Not supplied separately from Crankcase.	7	0				ZA4250
Paper Washer for Timing Cover	3				ZA4270	
Paper Washer for Timing Cover	3					ZA4280
Paper Washer for Timing Cover	3					ZA4290
O.H.C. Chain Cover	17	3			H249-2	
O.H.C. Chain Cover	17	3				G71-5
O.H.C. Chain Cover Fabric	1	9			H249-3	
O.H.C. Chain Cover Fabric	1	9				G71-6
Rivets for Fabric	4			doz.	H249-4	G71-7
O.H.C. Chain Cover Cap	14	3			H249-5	
O.H.C. Chain Cover Cap	14	3				G71-8
Pins for Chain Cover (Long) 5/16 x 1-9/16 x 20 Round Head	6			each	H249-6	G71-9
Pins for Chain Cover (Short) 5/16 x 1-3/16 x 20 Round Head	3			each	H249-7	G71-10
Timing Cover Pins (Long) 1/8" B.A. x 1-3/16 Hex. Head	3				ZA4450	ZA4450
Timing Cover Pins (Short) 1/8" B.A. x 1/16 Hex. Head	2				ZA4460	ZA4460
Timing Cover Pins (Cheese Head) 1/8" B.A. x 1/16 Round Head	2				ZA4470	ZA4470
Magneto Chain Cover Pin (Long) 1/8" B.A. x 2 Hex. Head	3				ZA4480	ZA4480
						ZA4480

42

W.	Ordering	Quote	Description	and Part	Number	from

Correct Column for your Horse Power and Model.

Illustration No.	DESCRIPTION OF PART.	Price, $\frac{\text{p.}}{\text{z}}$ & d.	9.96 h.p.	3.49 h.p.	4.98 h.p.	2.48 h.p.
	Engine—Continued.					
	Crankcase Half, with Bushes (Driving Side)...	1 13 0	ZA4103	..
42	Crankcase Half, with Races (Driving Side)	2 3 3	ZA4120	..
	Crankcase Half, with Bushes (Driving Side). + NOTE—Crankcase Halves are not supplied separately.	1 5 9	ZA4140
	Paper Washer for Crankcase ..	3	ZA4160
	Paper Washer for Crankcase ..	3	..	ZA4170
	Paper Washer for Crankcase ..	3	ZA4180	..
	Paper Washer for Crankcase ..	3	ZA4190	..
	Paper Washer for Crankcase ..	3	ZA4200
	Timing Cover only, with Bushes ..	1 0 6	ZA4210
	Timing Cover only, with Bushes ..	8 0	..	ZA4230	ZA4230	..
43	Timing Cover only, with Bushes .. + NOTE—Not supplied separately from Crankcase.	7 0	ZA4250
	Paper Washer for Timing Cover ..	3	ZA4270
	Paper Washer for Timing Cover ..	3	..	ZA4280	ZA4280	..
	Paper Washer for Timing Cover ..	3	ZA4290
	O.H.C. Chain Cover ..	17 3	..	H249-2
	O.H.C. Chain Cover ..	17 3	G71-5	..
	O.H.C. Chain Cover Fabric ..	1 9	..	H249-3
	O.H.C. Chain Cover Fabric ..	1 9	G71-6	..
	Rivets for Fabric .. doz.	4	..	H249-4	G71-7	..
	O.H.C. Chain Cover Cap ..	14 3	..	H249-5
	O.H.C. Chain Cover Cap ..	14 3	G71-8	..
	Pins for Chain Cover (Long) 5/16 x 1-9/16 x 20 Round Head	6	..	H249-6	G71-9	..
	Pins for Chain Cover (Short) 5/16 x 1-3/16 x 20 Round Head	3	..	H249-7	G71-10	..
	Timing Cover Pins (Long) 3/8" B.A. x 1-3/16 Hex. Head	3	ZA4450	ZA4450	ZA4450	..
	Timing Cover Pins (Short) 3/8" B.A. x 11/16 Hex. Head	2	ZA4460	ZA4460	ZA4460	ZA4460
	Timing Cover Pins (Cheese Head). 1/2" O" B.A. x 1/2 Round Head	2	ZA4470	ZA4470	ZA4470	ZA4470
	Magneto Chain Cover Pin (Long). 1/2" O" B.A. x 1/2 Hex. Head	3	ZA4480	ZA4480	ZA4480	ZA4480

Engine—Continued.

Crankcase Half, with Bushes (Driving Side)...	1	13	0			ZA4100
Crankcase Half, with Races (Driving Side)	2	3	3			ZA4120
Crankcase Half, with Bushes (Driving Side). NOTE—Crankcase Halves are not supplied separately.	1	5	9			ZA4140
Paper Washer for Crankcase	3				ZA4160	
Paper Washer for Crankcase	3				ZA4170	
Paper Washer for Crankcase	3					ZA4180
Paper Washer for Crankcase	3					ZA4190
Paper Washer for Crankcase	3					ZA4200
Timing Cover only, with Bushes	1	0	6		ZA4210	
Timing Cover only, with Bushes	8	0				ZA4230
Timing Cover only, with Bushes NOTE—Not supplied separately from Crankcase.	7	0				ZA4250
Paper Washer for Timing Cover	3				ZA4270	
Paper Washer for Timing Cover	3					ZA4280
Paper Washer for Timing Cover	3					ZA4290
O.H.C. Chain Cover	17	3			H249-2	
O.H.C. Chain Cover	17	3				G71-5
O.H.C. Chain Cover Fabric	1	9			H249-3	
O.H.C. Chain Cover Fabric	1	9				G71-6
Rivets for Fabric	4			doz.	H249-4	G71-7
O.H.C. Chain Cover Cap	14	3			H249-5	
O.H.C. Chain Cover Cap	14	3				G71-8
Pins for Chain Cover (Long) 5/16 x 1-9/16 x 20 Round Head	6			each	H249-6	G71-9
Pins for Chain Cover (Short) 5/16 x 1-3/16 x 20 Round Head	3			each	H249-7	G71-10
Timing Cover Pins (Long) 1/8" B.A. x 1-3/16 Hex. Head	3				ZA4450	ZA4450
Timing Cover Pins (Short) 1/8" B.A. x 1/16 Hex. Head	2				ZA4460	ZA4460
Timing Cover Pins (Cheese Head) 1/8" B.A. x 1/16 Round Head	2				ZA4470	ZA4470
Magneto Chain Cover Pin (Long) 1/8" B.A. x 2 Hex. Head	3				ZA4480	ZA4480
						ZA4480

NOTE When Indicates models for which Part is suitable. When occurs in more than one column in same line Part is interchangeable.

Indicates models for which Part is suitable.

MODELS

[illegible]

WH **Ordering Quote Description and Part Number from**
Correct Column for Your Horse Power and Model.

Correct Column for Your Horse Power and Model.			P A R T N U M B E R				
Illustration No.	DESCRIPTION OF PART.	Price, £ s. d.	9.96 h.p.	14.98 h.p.	19.98 h.p.	24.98 h.p.	
Engine—Continued.							
	Magneto Chain Cover, complete with Pump Unit	1 10 0	ZA4490	
	Magneto Chain Cover, complete with Pump Unit	1 10 0	..	ZA4510	ZA4510	..	
	Magneto Chain Cover, complete with Pump Unit	1 10 0	ZA4530	
	Magneto Chain Cover less Pump Parts	14 6	ZA4550	
	Magneto Chain Cover less Pump Parts	14 6	..	ZA4570	ZA4570	..	
	Magneto Chain Cover less Pump Parts	14 6	ZA4590	
	Pump Sealing Washer (Cork)	1	ZA4610	ZA4610	ZA4610	ZA4610	
	Oil Feed Tube	3	ZA4620	ZA4620	ZA4620	ZA4620	
	Oil Sump Connection, complete with Filter	2 3	ZA4630	ZA4630	ZA4630	ZA4630	
	Oil Sump Connection only	10	ZA4640	ZA4640	ZA4640	ZA4640	
	Oil Feed Washer	3	ZA4650	ZA4650	ZA4650	ZA4650	
	Pump Plunger..	6 0	ZA4660	ZA4660	ZA4660	ZA4660	
	Pump Plunger..	6 0	..	ZA4665	ZA4665	..	
	Driving Worms	2 3	ZA4670	ZA4670	ZA4670	ZA4670	
	Driving Spindle Bush	1 0	ZA4680	ZA4680	ZA4680	ZA4680	
	End Plug	1 0	ZA4690	ZA4690	ZA4690	ZA4690	
	Washer for End Plug	2	ZA4700	ZA4700	ZA4700	ZA4700	
	Short Unions..	6	ZA4710	ZA4710	ZA4710	ZA4710	
	Long Unions..	8	ZA4720	ZA4720	ZA4720	ZA4720	
	Brass Liner	1 0	ZA4730	ZA4730	ZA4730	ZA4730	
	Liner Lock Screws 4 B.A. x 1/4 Cheese Head	1	ZA4740	ZA4740	ZA4740	ZA4740	
	Small Plug Screws 2 B.A. x 1/4 Cheese Head	1	ZA4750	ZA4750	ZA4750	ZA4750	
	Bush Screws 4 B.A. x 1/4 Cheese Head	1	ZA4760	ZA4760	ZA4760	ZA4760	
	Cam Screws	3	ZA4770	ZA4770	ZA4770	ZA4770	
	Bush for Front Exhaust Camshaft in Timing Cover	1 6	K205	H261-1	G48-1	F62	
	Bush for Front Exhaust Camshaft in Crankcase	1 6	K214	H266-1	G47-1	F64	
	Bush for Rear Exhaust Camshaft in Timing	1 6	K214	

* Indicates models for which Part is suitable.
** occurs in more than one column in same line Part is interchangeable.

MODELS

MODELS		For Dealer's Use	
M1 Twin	*	+	+
M2 Twin	*	+	+
M3 s.v.	*	+	+
M4 s.v.	*	+	+
M5 s.v.	*	+	+
M6 o.h.c.	*	+	+
M7 o.h.c.	*	+	+
M8 o.h.v.	*	+	+
M9 s.v.	*	+	+
M10 o.h.c.	*	+	+
M12 s.v.	*	+	+

Correct Column for your Horse Power and Model.

Engine--Continued.

MODELS

Engine--Continued.

[illegible]

Correct Column for your Horse Power and Model.

Engine—Continued.

NOTE
When
) Indicates models for which Part is suitable.
occurs in more than one column in same line Part is interchangeable.

MODELS

Detector		Use	
M1	Twin	M2	Twin
M1	Twin	M2	Twin
M3	s.v.	M4	s.v.
M5	s.v.	M6	o.h.v.
M7	o.h.c.	M8	o.h.v.
M9	s.v.	M10	o.h.c.
M12	s.v.		

NOTE "Indicates models for which Part is suitable. Part is interchangeable in more than one column in same line Part is interchangeable

21

What Ordering Quote Description and Part Number from

Correct Column for your Horse Power and Model.

Illustration No.	DESCRIPTION OF PART.	Price, \pounds s. d.	9.96 h.p.	3.40 h.p.	4.98 h.p.	2.48 h.p.
	Engine—Continued.					
	Pins for O.H.C. Spider Bearing 5/16 x 1 1/2 x 20	3
	O.H.C. Inspection Cap	1	9
	Pins for O.H.C. Inspection Cap 3/8" B.A. x 1 1/2 long x 5/16 dia.	4
	Distance Pillars for O.H.C. Rocker Box	1	9
	Holding Down Pins for O.H.C. Rocker Box 3/8 x 1 1/2 x 20	7
	Holding Down Pins for O.H.V. Rocker Box 3/8 x 1 1/2 x 20	7
	Holding Down Pins for O.H.V. Rocker Box 3/8 x 1 1/2 x 20	7
	Rubber Washer for Rocker Box	7
	Cork Washer for O.H.C. Rockers per set	6
	O.H.V. Rocker with Studs-Exhaust	15	0
	O.H.C. Rocker with Studs-Exhaust	17	8
	O.H.V. Rocker with Studs-Inlet	15	0
	O.H.C. Rocker with Studs-Inlet	17	8
	NOTE—Rockers can only be supplied complete.					
	Nut for Rocker Arm, 5/16 x 26 x 9/32 x 17/32	1
	Washer for Nut for Rocker Arm, 5/16 Plain.	1
	Bush for O.H.V. Rocker	2	3
	Stud for O.H.V. Valve Rocker 5/16 x 1 1/2 x 24	8
	Stud for O.H.C. Valve Rocker 5/16 x 1 1/2 x 24	8
	Stud for Rocker Ball End	9
	Stud for Cam Rocker	10
	Nut for Cam Rocker Pin, 5/16 x 21 x 5/32 x 17/32	1
	Grease Nipple for Rockers	3
	O.H.C. Rocker Spindle	8	5
	O.H.V. Tappet Tube Overall 9 in. both ends female	4	0
	O.H.V. Tappet Tube Overall 9-15/32 both ends female	4	0
	Tappet Enclosing Tube (Long)	2	0
	Tappet Enclosing Tube (Short)	1	0

Engine—Continued.

[illegible]

* Indicates models for which Part is suitable.
* occurs in more than one column in same line Part is interchangeable.

PART NUMBER

MODELS

[illegible]

* occurs in more than one column in same line Part is interchan. He

* Indicates models for which Part is suitable.
* occurs in more than one column in same line

Correct Column for your Horse Power and Model.

MODELS		For Dealer's Use	
M1	Twin	*	0
M2	Twin	*	0
M3	S.V.	*	0
M4	S.V.	*	0
M5	S.V.	*	0
M6	o.h.v.	*	0
M7	o.h.c.	*	0
M8	o.h.v.	*	0
M9	S.V.	*	0
M10	o.h.c.	*	0
M12	S.V.	*	0

When Ordering Quote Description and Part Number from

Correct Column for your Horse Power and Model.

Correct Column for your Horse Power and Model.		PART NUMBER	
Illustration No.	DESCRIPTION OF PART.	Price. £ s. d.	
	Magneto Fittings. (Continued).		
	Magneto Platform Pin (Long) $\frac{3}{4}$ x 16 x $\frac{1}{2}$ x 1, head thick	4	ZA8210 ZA8210 ZA8210
	Magneto Platform Pin (Long) (as K365) $\frac{3}{4}$ x 16 x $\frac{3}{8}$ x 3/16 head thick	2	ZA8220
	Washer for Magneto Platform Pin $\frac{3}{4}$ Single Spring	1	K300 H160 G79-1 F89
	Distance Piece for Magneto Platform	4	K1410
	Bolt for Magneto Platform 5/16 x 33 x 20	7	K1411
	Link for Magneto Platform Bolt	10	K1400

二、

NO - Indicates models for which Part is suitable.
W - occurs in more than one column in same line Part is interchangeable.

MODELS

[illegible]

Indicates models for which Part is suitable.

Correct Column for your Horse Power and Model.

MODELS

Exhaust System.

NOTE Early Models M4,5,6,7,8,9,10, were Fitted with Round Type of Silencer. Later Models have Flat Type Silencer. Type fitted must be stated when ordering Parts of Exhaust system.

All M6 Two Port N8 Two Port and M12 Models are fitted with Round Type Silencer.

**Exhaust System complete with Exhaust Pipes,
Silencer, etc.**

Exhaust System complete with Exhaust Pipe, Silencer, etc.

Exhaust System complete with Exhaust Pipe,

Exhaust System complete with Exhaust Pipes.

Exhaust System complete with Exhaust Pipe,

Exhaust System complete with Exhaust Pipe, Silencer, etc.

Silencer, etc.
Exhaust System complete with Exhaust Pipes;

Silencer, etc. (Two Port)
Exhaust System complete with Exhaust Pipe

Silencer, etc.

Silencer, etc.

Silencer, etc.

1997, 1998, 1999, 2000, 2001, 2002, 2003, 2004, 2005, 2006, 2007, 2008, 2009, 2010, 2011, 2012, 2013, 2014, 2015, 2016, 2017, 2018, 2019, 2020, 2021, 2022, 2023, 2024, 2025, 2026, 2027, 2028, 2029, 2030, 2031, 2032, 2033, 2034, 2035, 2036, 2037, 2038, 2039, 2040, 2041, 2042, 2043, 2044, 2045, 2046, 2047, 2048, 2049, 2050, 2051, 2052, 2053, 2054, 2055, 2056, 2057, 2058, 2059, 2060, 2061, 2062, 2063, 2064, 2065, 2066, 2067, 2068, 2069, 2070, 2071, 2072, 2073, 2074, 2075, 2076, 2077, 2078, 2079, 2080, 2081, 2082, 2083, 2084, 2085, 2086, 2087, 2088, 2089, 2090, 2091, 2092, 2093, 2094, 2095, 2096, 2097, 2098, 2099, 2100, 2101, 2102, 2103, 2104, 2105, 2106, 2107, 2108, 2109, 2110, 2111, 2112, 2113, 2114, 2115, 2116, 2117, 2118, 2119, 2120, 2121, 2122, 2123, 2124, 2125, 2126, 2127, 2128, 2129, 2130, 2131, 2132, 2133, 2134, 2135, 2136, 2137, 2138, 2139, 2140, 2141, 2142, 2143, 2144, 2145, 2146, 2147, 2148, 2149, 2150, 2151, 2152, 2153, 2154, 2155, 2156, 2157, 2158, 2159, 2160, 2161, 2162, 2163, 2164, 2165, 2166, 2167, 2168, 2169, 2170, 2171, 2172, 2173, 2174, 2175, 2176, 2177, 2178, 2179, 2180, 2181, 2182, 2183, 2184, 2185, 2186, 2187, 2188, 2189, 2190, 2191, 2192, 2193, 2194, 2195, 2196, 2197, 2198, 2199, 2200, 2201, 2202, 2203, 2204, 2205, 2206, 2207, 2208, 2209, 2210, 2211, 2212, 2213, 2214, 2215, 2216, 2217, 2218, 2219, 2220, 2221, 2222, 2223, 2224, 2225, 2226, 2227, 2228, 2229, 2230, 2231, 2232, 2233, 2234, 2235, 2236, 2237, 2238, 2239, 2240, 2241, 2242, 2243, 2244, 2245, 2246, 2247, 2248, 2249, 2250, 2251, 2252, 2253, 2254, 2255, 2256, 2257, 2258, 2259, 2260, 2261, 2262, 2263, 2264, 2265, 2266, 2267, 2268, 2269, 2270, 2271, 2272, 2273, 2274, 2275, 2276, 2277, 2278, 2279, 2280, 2281, 2282, 2283, 2284, 2285, 2286, 2287, 2288, 2289, 2290, 2291, 2292, 2293, 2294, 2295, 2296, 2297, 2298, 2299, 2300, 2301, 2302, 2303, 2304, 2305, 2306, 2307, 2308, 2309, 2310, 2311, 2312, 2313, 2314, 2315, 2316, 2317, 2318, 2319, 2320, 2321, 2322, 2323, 2324, 2325, 2326, 2327, 2328, 2329, 2330, 2331, 2332, 2333, 2334, 2335, 2336, 2337, 2338, 2339, 2340, 2341, 2342, 2343, 2344, 2345, 2346, 2347, 2348, 2349, 2350, 2351, 2352, 2353, 2354, 2355, 2356, 2357, 2358, 2359, 2360, 2361, 2362, 2363, 2364, 2365, 2366, 2367, 2368, 2369, 2370, 2371, 2372, 2373, 2374, 2375, 2376, 2377, 2378, 2379, 2380, 2381, 2382, 2383, 2384, 2385, 2386, 2387, 2388, 2389, 2390, 2391, 2392, 2393, 2394, 2395, 2396, 2397, 2398, 2399, 2400, 2401, 2402, 2403, 2404, 2405, 2406, 2407, 2408, 2409, 2410, 2411, 2412, 2413, 2414, 2415, 2416, 2417, 2418, 2419, 2420, 2421, 2422, 2423, 2424, 2425, 2426, 2427, 2428, 2429, 2430, 2431, 2432, 2433, 2434, 2435, 2436, 2437, 2438, 2439, 2440, 2441, 2442, 2443, 2444, 2445, 2446, 2447, 2448, 2449, 2450, 2451, 2452, 2453, 2454, 2455, 2456, 2457, 2458, 2459, 2460, 2461, 2462, 2463, 2464, 2465, 2466, 2467, 2468, 2469, 2470, 2471, 2472, 2473, 2474, 2475, 2476, 2477, 2478, 2479, 2480, 2481, 2482, 2483, 2484, 2485, 2486, 2487, 2488, 2489, 2490, 2491, 2492, 2493, 2494, 2495, 2496, 2497, 2498, 2499, 2500, 2501, 2502, 2503, 2504, 2505, 2506, 2507, 2508, 2509, 2510, 2511, 2512, 2513, 2514, 2515, 2516, 2517, 2518, 2519, 2520, 2521, 2522, 2523, 2524, 2525, 2526, 2527, 2528, 2529, 2530, 2531, 2532, 2533, 2534, 2535, 2536, 2537, 2538, 2539, 2540, 2541, 2542, 2543, 2544, 2545, 2546, 2547, 2548, 2549, 2550, 2551, 2552, 2553, 2554, 2555, 2556, 2557, 2558, 2559, 2560, 2561, 2562, 2563, 2564, 2565, 2566, 2567, 2568, 2569, 2570, 2571, 2572, 2573, 2574, 2575, 2576, 2577, 2578, 2579, 2580, 2581, 2582, 2583, 2584, 2585, 2586, 2587, 2588, 2589, 2590, 2591, 2592, 2593, 2594, 2595, 2596, 2597, 2598, 2599, 2600, 2601, 2602, 2603, 2604, 2605, 2606, 2607, 2608, 2609, 2610, 2611, 2612, 2613, 2614, 2615, 2616, 2617, 2618, 2619, 2620, 2621, 2622, 2623, 2624, 2625, 2626, 2627, 2628, 2629, 2630, 2631, 2632, 2633, 2634, 2635, 2636, 2637, 2638, 2639, 2640, 2641, 2642, 2643, 2644, 2645, 2646, 2647, 2648, 2649, 2650, 2651, 2652, 2653, 2654, 2655, 2656, 2657, 2658, 2659, 2660, 2661, 2662, 2663, 2664, 2665, 2666, 2667, 2668, 2669, 2670, 2671, 2672, 2673, 2674, 2675, 2676, 2677, 2678, 26

Silencer Only in front of engine (rolling)

silencer only (Round 1 type)

Silencer only (Round Type)
(Two Port)

Silencer only (Round Type)

Silençer only (Flat Type)

Front Baffle Pipe (Flat Type)

Fish Tail (Flat Type)

Pin for Fish Tail (Flat Type) .. $5/16 \times \frac{9}{16} \times 20$

Tail Pipe (Touring)

Rail Pipe (Round Type).. ..

Clip for Tail Pipe (Touring)

Clip for Tail Pipe (either type) ..

This scan is explicit for non-commercial use and is not intended for financial or material gain by anyone

WB. Ordering Quote Discription and Part Number from

Correct Column for your Horse Power and Model.

Illustration No.	DESCRIPTION OF PART.	Price, £ s. d.	9.96 h.p. : 3.42 h.p.	4.98 h.p.	2.48 h.p.
	Exhaust System.				
	(Continued).				
N.I.	Nut for Small Exhaust Pipe Clip (Flat Type) 5 16 x 20 x 1 1/4 x 19 3/2	1	K707
	Washer for Nut for Small Exhaust Pipe Clip (Flat Type) 5 16 Single Spring	1	K299
	Footrest Clip for Exhaust Pipe (Round Type)	1 3	..	H1259	ZA9550
	Footrest Clip for Exhaust Pipe (Round Type)	1 3	ZA9550
114	Footrest Clip for Exhaust Pipe (Flat Type)	1 3
	Footrest Clip for Exhaust Pipe (Round Type)	1 3
	Footrest Clip for Exhaust Pipe (Flat Type)	1 3
	Footrest Clip for Exhaust Pipe (Round Type)	1 3
N.I.	Front Exhaust Pipe Clip (Round Type) (Two Port)	1 3	..	ZA9570	..
	Front Exhaust Pipe Steady Rod (Round Type) (Two Port)	1 3	..	ZA9590	..
	Distance Tube for Steady Rod (Round Type)	1 3	..	ZA9600	..
	Clip for Silencer (Either Type)	1 3	ZA9610	ZA9610	ZA9610
115	Clip for Silencer (Round Type) (Two Port)	1 3	..	ZA9610	ZA9610
116	Pin for Clip for Silencer (Flat Type) 5 16 x 1 1/4 x 20	2	ZA8840	ZA8840	ZA8840
	Pin for Clip for Silencer (Round Type) (Two Port) 5 16 x 1 1/4 x 20	2	..	ZA8840	..
	Pin for Clip for Silencer (Round Type) (Two Port) 5 16 x 1 1/2 x 20	2	G173-8
	Nut for Clip for Silencer (Flat Type) 5 16 x 20 x 1 1/4 x 19 3/2	1	K707	H320	G212
N.I.	Nut for Clip for Silencer (Round Type) 5 16 x 20 x 1 1/4 x 19 3/2	1	..	H320	G212
	Washer for Nut for Clip for Silencer (Flat Type) 5 16 Single Spring	1	K299	H163	ZA6040
	Washer for Nut for Clip for Silencer (Round Type) (Two Port)	1	..	H163	ZA6040
	Large Clip round Silencer (Round Type) (Two Port)	1 6	ZA6830
N.I.	Pin for Large Clip round Silencer (Round Type) (Two Port) 5 16 x 1 1/2 x 20	2	ZA9700
	Nut for Large Clip round Silencer (Round Type) (Two Port)	1	ZA8840
	Washer for Nut for Large Clip round Silencer (Round Type) (Two Port)	1	G212
	Steady Strap for Silencer (Round Type) (Two Port)	1 3	..	ZA9750	..

NOT: Indicates models for which Part is suitable.
When a number occurs in more than one column in same line Part is interchangeable.

MODELS

[illegible]

This scan is explicit for non-commercial use and is not intended for financial or material gain by anyone

When ordered	Quote Description and Part Number (from
--------------	---

Correct Column for your Horse Power and Model.

Illustration No.	DESCRIPTION OF PART.	Price. £ s. d.	9.96 h.p.	3.4) h.p.	4.98 h.p.	2.48 h.p.
N.I.	Gearbox.					
	Gearbox, complete with Clutch and Footstarter	13 10 3	YA1	..	YA1	..
	Gearbox, complete with Clutch and Footstarter (Wide Ratio)	12 7 3	..	YA20
	Gearbox, complete with Clutch and Footstarter (Close Ratio)	12 7 3	..	YA40
	Gearbox, complete with Clutch and Footstarter	11 10 0	YA60
	Gearbox, complete with Clutch only (Non-Footstarter type, Close Ratio)	11 4 3	..	YA80
	Gearbox, complete with Clutch only (Non-Footstarter type, Close Ratio)	11 15 9	YA100	..
	Gearbox, Shell, with Cover, less Bearings	2 8 3	YA120	..	YA120	..
	Gearbox Shell, with Cover, less Bearings	2 0 3	..	YA140
	Gearbox Shell, with Cover, less Bearings	1 14 6	YA160
	Gearbox Shell, without Cover and Bearings	1 17 3	YA180	..	YA180	..
117	Gearbox Shell, without Cover and Bearings	1 8 9	..	YA200
	Gearbox Shell, without Cover and Bearings	1 5 9	YA220
	Gearbox Shell, with Cover and Bearings	4 0 9	YA240	..	YA240	..
	Gearbox Shell, with Cover and Bearings	3 10 6	..	YA260
	Gearbox Shell, with Cover and Bearings	3 7 0	YA280
	Felt Washer for Gearbox Shell	.. 3	K406	H399	G106-2	F109
	Gearbox Cover, with Bearings	1 3 3	YA310	..	YA310	..
	Gearbox Cover, with Bearings	1 3 3	..	YA330
119	Gearbox Cover, with Bearings	1 0 3	YA350
	Gearbox Cover, without Bearings	9 9	YA360	..	YA360	..
	Gearbox Cover, without Bearings	9 9	..	YA390
	Gearbox Cover, without Bearings	8 6	YA410
	Paper Washer for Gearbox Cover	2	K414	..	YA430	..
	Paper Washer for Gearbox Cover	2	..	H394
N.I.	Paper Washer for Gearbox Cover	2	F112
120	Gearbox Bearing, 30 x 62 x 16 m.m.	12 3	K415	H395	G109	F113

Gearbox.

22

211

818

19

五

120

55

NOT
When *

MODELS

[illegible]

C

1

11

**W. Ordering Quote Description and Part Number from
Correct Column for your Horse Power and Model.**

Illustration No.	DESCRIPTION OF PART.	Price, £ s. d.	9.56 h.p.	3.49 h.p.	4.98 h.p.	2.48 h.p.
121	Gearbox Bearing, 15 x 37 x 9 m.m. (3 used) ..	6 9	K 116	H 356	G 110	F 114
122	Gearbox Stud (Front) Plain 7/16 x 2½ x 26 and 14 ..	4	K 418	..	G 112	..
	Gearbox Stud (Front) Plain 7/16 x 2½ x 26 and 14 ..	4	..	H 358-1	..	F 116
123	Gearbox Adjusting Stud (Rear) Shouldered 7/16 x 2½ x 26 and 14 ..	4	K 419	..	G 113	..
	Gearbox Adjusting Stud (Rear) Shouldered 7/16 x 2½ x 26 and 14 ..	4	..	H 359-1	..	F 117
	Nut for Gearbox Studs 7/16 x 26 x ½ x 45/64 ..	3	Y A 530	Y A 530	Y A 530	Y A 520
	Washer for above Nut 7/16 Plain ..	1	K 421	H 401	G 113-2	F 119
N. I.	Gearbox Adjusting Sleeve ..	10	Y A 540	Y A 540	Y A 540	Y A 540
	Eyebolt for Adjusting Sleeve ¾ x 2 underhead x 16 ..	1 9	Y A 560	Y A 560	Y A 560	..
	Eyebolt for Adjusting Sleeve ¾ x 1¼ underhead x 16 ..	1 9	Y A 580
124	High Speed Dog Wheel (Wide Ratio) ..	1 0 9	Y A 600	..	Y A 600	..
	High Speed Dog Wheel (Wide Ratio) ..	19 0	..	Y A 620
	High Speed Dog Wheel (Close Ratio) ..	1 0 9	Y A 640	..
	High Speed Dog Wheel (Close Ratio) ..	19 0	..	Y A 660
	High Speed Dog Wheel ..	17 3	Y A 680
125	High Speed Dog Locknut 1-1/16 x 20 x 3/16 x ½ ..	3	K 427	H 411	G 115	F 124
126	High Speed Dog Locking Plate ..	2	Y A 710	Y A 710	Y A 710	Y A 710
127	Sliding Dog Wheel (Wide and Close Ratio) ..	13 9	Y A 720	..	Y A 720	..
	Sliding Dog Wheel (Wide Ratio) ..	13 0	..	Y A 740
	Sliding Dog Wheel (Close Ratio) ..	13 0	..	Y A 760
	Sliding Dog Wheel ..	12 0	Y A 780
	Low Speed Dog Wheel (Close Ratio) ..	5 9	G 122-1	..
128	Low Speed Dog Wheel (Wide Ratio) ..	5 9	K 434	H 419	G 122	..
	Low Speed Dog Wheel (Close Ratio) ..	5 9	..	H 421
	Low Speed Dog Wheel ..	5 3	F 123
129	Layshaft complete with Gears (Wide Ratio) ..	1 8 9	Y A 880	..	Y A 880	..

* Indicates models for which Part is suitable.
* occurs in more than one column in same line Part is interchangeable.

MODELS

[illegible]

* Indicates models for which Part is suitable.
 * occurs in more than one column in same line Part is interchangeable.

Connect Column for your Horse Power and Model.

NOTE—See Pages 6--7 for Gear Ratio Tables

NOTE—See Pages 6--7 for Gear Ratio Tables

Gearbox—Continued.

Correct Column for your Horse Power and Model.			P A R T N U M B E R			
Illustration No.	DESCRIPTION OF PART.	Price £ s. d.	9.96 h.p.	3.49 h.p.	4.95 h.p.	2.88 h.p.
Gearbox—Continued.						
135	Gearbox Mainshaft (9-13/16 in. Splined)	17 9	YA1380
N.I.	Gearbox Mainshaft Locknut $\frac{1}{2}$ x 18 x 5/32 x 1	2	K432	H454	G161	F138
136	Gearshifter Arch with Arm	11 0	YA1410	..	YA1410	..
	Gearshifter Arch with Arm	10 3	..	YA1430
	Gearshifter Arch with Arm	10 3	F139
137	Gearshifter Arch only	6 3	K456	..	G140-2	..
	Gearshifter Arch only	5 9	..	H457
	Gearshifter Arch only	5 9	F140
138	Gearshifter Arm only	5 0	YA1510	..	YA1510	..
	Gearshifter Arm only	4 6	..	YA1530
	Gearshifter Arm only	4 6	F141
139	Cotter for Gearshifter Arm $\frac{1}{2}$ x $\frac{1}{2}$ long	1	K459	H458-3	YA1560	F142
140	Gearshifter Bush	2 0	K461	..	G141	..
	Gearshifter Bush	2 0	..	H460	..	F143
	Gearshifter Lever	3 6	YA1620	..	YA1640	..
141	Gearshifter Lever	3 6
	Gearshifter Lever	3 6	YA1660	..
	Gearshifter Lever	3 6	YA1680
142	Pin for Gearshifter Lever $\frac{1}{2}$ x $\frac{1}{2}$ x 20	2	K467	H465	G144	F145
143	Thrust Washer	7	K469	H468	G137	F146
144	Thrust Washer Locknut $\frac{1}{2}$ x 24 x 7/32 x 1 $\frac{1}{2}$ (L.H. Thread)	10	K470	H469	G138	F147
145	Thrust Washer Additional Locknut $\frac{1}{2}$ x 24 x 3/16 x 13/16 (L.H. Thread)	3	YA1750	H471	YA1750	F148
146	Ball Thrust Race	1 3	K471	H473	G139	F149
147	Gearbox Oil Plug	10	K472	H474	G136	F150
148	Oil Level Lever	6	YA1800	YA1800	YA1800	YA1800
N.I.	Washer for Oil Level Lever 7/16 Double Spring	2	K475	H476	G135-1	F152
149	Oil Level Lever Pin 5/16 x 13/16 x 20	2	K474	H477	G135	F153

NOTE—See Pages 6--7 for Gear Ratio Tables

MODELS

[illegible]

NOT. Indicates models for which Part is suitable.
✱ When occurs in more than one column in same line Part is interchangeable.

Correct Column for your Horse Power and Model.

[illegible]

Correct Column for your Horse Power and Model.

Footstarter.

NOTE * I² indicates models for which Part is suitable.
* is in more than one column in same line Part is interchangeable.
* When

MODELS

[illegible]

When Ordering Quote Description and Part Number from

Correct Column for your Horse Power and Model.

Illustration No.	DESCRIPTION OF PART.	Price \$ s. d.	9.90 h.p.	3.49 h.p.	4.98 h.p.	2.48 h.p.
------------------	----------------------	----------------	-----------	-----------	-----------	-----------

Footstarter—Continued.

N.I.	Fixing Pin for outside Washer, 5/16 x 5/8 x 20	2	K559	H537	G173-8	
173	Footstarter Pedal Rubber	1	6	K560	H534	G173-5
179	Footstarter Ratchet Wheel	5	3	YA3080	YA3080	YA3080
180	Footstarter Ratchet Spring	4	K564	H540	G180	
	Footstarter Ratchet Spring	4				YA3100
181	Return Spring for Footstarter Quadrant	9	YA3120	YA3120	YA3120	YA3120

N.I. Fixing Pin for Return Spring for Footstarter Quadrant 2 B.A. 9/32 x 1/2

Change Speed Parts.

182	Change Speed Quadrant only	8	9	YA4000	YA4000	YA4000
	Change Speed Quadrant only	8	9			YA4020

N.I. Pin for fixing Change Speed Quadrant to Tank, 1/4" B.A. x 1/2

	Washer for Pin for fixing Change Speed Quadrant to Tank, 9/32 Single Spring	1	YA4000	YA4000	YA4000	YA4000
183	Change Speed Lever, with Knob	13	3	H556		F217

184 Change Speed Lever, with Knob

	Knob only for Change Speed Lever	10	K589	H558	G185-1	F218
N.I.	Washer for Knob for Change Speed Lever, 7/16, Stagle Spring	1	WA1520	WA1520	WA1520	WA1520

185 Fulcrum Pin for Change Speed Lever

	Washer for Fulcrum Pin for Change Speed Lever, 7/32 Double Spring	1	K594	H365	G186	F221
N.I.	Locknut for Fulcrum Pin for Change Speed Lever, 5/16 x 20 x 1	2	YA4200	H564	G186-2	F220

186 Change Speed Rod only, with Yoke End

	Change Speed Rod only..	1	9	YA4240	YA4240	
	Change Speed Rod only.	1	9			YA4200

187 Yoke End for Change Speed Rod

	Yoke End for Change Speed Rod ..	7		YA4300	YA4300	YA4300
	Pin for Yoke End for Change Speed Rod	1	YA4320	YA4320	YA4320	YA4320

N.I. Cotter for Pin for Yoke End for Change Speed Rod

	Locknut for Change Speed Rod 5/16 x 20 x 3/16, Plated	1	YA4360	YA4360	YA4360	
	Locknut for Change Speed Rod	1	H510	G157	F178	

When Ordering Quote Description and Part Number from

Correct Column for your Horse Power and Model.

Illustration No.	DESCRIPTION OF PART.	Price, £ s. d.	P A R T N U M B E R			
			9.06 h.p.	3.49 h.p.	4.98 h.p.	2.48 h.p.
Front Brake.						
196	Front Wheel Brake Shoes, with Linings and Springs	11 6	WA1120	WA1120	WA1120	..
	Front Wheel Brake Shoes, with Linings and Springs	8 0	WA1140
197	Top Front Brake Shoe only, with Lining	5 9	WA1160	WA1160	WA1160	..
	Top Front Brake Shoe only, with Lining	4 0	WA1180
198	Bottom Front Brake Shoe only, with Lining	5 9	WA1200	WA1200	WA1200	..
	Bottom Front Brake Shoe only, with Lining	4 0	WA1220
199	Front Brake Linings, with Rivets .. pair.	4 0	WA1240	WA1240	WA1240	..
	Front Brake Linings, with Rivets .. pair.	3 3	WA1260
N.I.	Rivets only for Brake Linings .. set 8.	4	WA1280	WA1280	WA1280	WA1280
	Springs for Front Brake Shoes .. each.	2	K703	H650	G218	F27
200	Anchor Plate for Front Brake ..	11 3	WA1320
	Anchor Plate for Front Brake ..	10 6	..	WA1340
201	Anchor Plate for Front Brake ..	11 9	WA1360	..
	Anchor Plate for Front Brake ..	10 6	WA1380
202	Bolt for Anchor Plate for Front Brake 7/16 x 1-7/32 x 26	4	F277
	Bolt for Anchor Plate for Front Brake 7/16 x 1-7/32 x 26	4	K699	H652	G216	..
	Locknut for Front Anchor Plate 3/4 x 24 x 11.32 x 1	3	K696
	Locknut for Front Anchor Plate 7/16 x 20 x 7/16 x 45/64	3	..	H611-1	..	F257
	Locknut for Front Anchor Plate 1/4 x 24 x 5/16 x 13/16	3	WA1500	..
	Washer for Front Anchor Plate Bolt 7/16 Single Spring	1	WA1520	WA1520	WA1520	WA1520
N.I.	Front Hub Brake Drum, with Centre	16 0	K686
	Front Hub Brake Drum Centre only	1 9	K688
	Pins for retaining Brake Drum Centre 3/16 x 1/2 x 24	1	K429
	Front Dummy Spindle only	2 3	K695
	Washer for Front Dummy Spindle 1/4 Plain	1	WA1020
	Locknut for Front Spindle (Blind) 1/4 x 24 x 1-17/32 x 53/64	3	K697

NO1 When * Indicates models for which Part is suitable, occurs in more than one column in same line Part is interchangeable.

MODELS										For Dealer's Use
M1 Twin	M2 Twin	M3 s.v.	M4 s.v.	M5 s.v.	M6 o.h.v.	M7 o.h.c.	M8 o.h.v.	M9 s.v.	M10 o.h.c.	M12 s.v.
*	*	*	*	*	*	*	*	*	*	*
*	*	*	*	*	*	*	*	*	*	*
*	*	*	*	*	*	*	*	*	*	*
*	*	*	*	*	*	*	*	*	*	*
*	*	*	*	*	*	*	*	*	*	*
*	*	*	*	*	*	*	*	*	*	*
*	*	*	*	*	*	*	*	*	*	*
*	*	*	*	*	*	*	*	*	*	*
*	*	*	*	*	*	*	*	*	*	*
*	*	*	*	*	*	*	*	*	*	*
*	*	*	*	*	*	*	*	*	*	*
*	*	*	*	*	*	*	*	*	*	*
*	*	*	*	*	*	*	*	*	*	*
*	*	*	*	*	*	*	*	*	*	*
*	*	*	*	*	*	*	*	*	*	*
*	*	*	*	*	*	*	*	*	*	*
*	*	*	*	*	*	*	*	*	*	*
*	*	*	*	*	*	*	*	*	*	*
*	*	*	*	*	*	*	*	*	*	*
*	*	*	*	*	*	*	*	*	*	*
*	*	*	*	*	*	*	*	*	*	*
*	*	*	*	*	*	*	*	*	*	*
*	*	*	*	*	*	*	*	*	*	*
*	*	*	*	*	*	*	*	*	*	*
*	*	*	*	*	*	*	*	*	*	*
*	*	*	*	*	*	*	*	*	*	*
*	*	*	*	*	*	*	*	*	*	*
*	*	*	*	*	*	*	*	*	*	*
*	*	*	*	*	*	*	*	*	*	*
*	*	*	*	*	*	*	*	*	*	*
*	*	*	*	*	*	*	*	*	*	*
*	*	*	*	*	*	*	*	*	*	*
*	*	*	*	*	*	*	*	*	*	*
*	*	*	*	*	*	*	*	*	*	*
*	*	*	*	*	*	*	*	*	*	*
*	*	*	*	*	*	*	*	*	*	*
*	*	*	*	*	*	*	*	*	*	*
*	*	*	*	*	*	*	*	*	*	*
*	*	*	*	*	*	*	*	*	*	*
*	*	*	*	*	*	*	*	*	*	*
*	*	*	*	*	*	*	*	*	*	*
*	*	*	*	*	*	*	*	*	*	*
*	*	*	*	*	*	*	*	*	*	*
*	*	*	*	*	*	*	*	*	*	*
*	*	*	*	*	*	*	*	*	*	*
*	*	*	*	*	*	*	*	*	*	*
*	*	*	*	*	*	*	*	*	*	*
*	*	*	*	*	*	*	*	*	*	*
*	*	*	*	*	*	*	*	*	*	*
*	*	*	*	*	*	*	*	*	*	*
*	*	*	*	*	*	*	*	*	*	*
*	*	*	*	*	*	*	*	*	*	*
*	*	*	*	*	*	*	*	*	*	*
*	*	*	*	*	*	*	*	*	*	*
*	*	*	*	*	*	*	*	*	*	*
*	*	*	*	*	*	*	*	*	*	*
*	*	*	*	*	*	*	*	*	*	*
*	*	*	*	*	*	*	*	*	*	*
*	*	*	*	*	*	*	*	*	*	*
*	*	*	*	*	*	*	*	*	*	*
*	*	*	*	*	*	*	*	*	*	*
*	*	*	*	*	*	*	*	*	*	*
*	*	*	*	*	*	*	*	*	*	*
*	*	*	*	*	*	*	*	*	*	*
*	*	*	*	*	*	*	*	*	*	*
*	*	*	*	*	*	*	*	*	*	*
*	*	*	*	*	*	*	*	*	*	*
*	*	*	*	*	*	*	*	*	*	*
*	*	*	*	*	*	*	*	*	*	*
*	*	*	*	*	*	*	*	*	*	*
*	*	*	*	*	*	*	*	*	*	*
*	*	*	*	*	*	*	*	*	*	*
*	*	*	*	*	*	*	*	*	*	*
*	*	*	*	*	*	*	*	*	*	*
*	*	*	*	*	*	*	*	*	*	*
*	*	*	*	*	*	*	*	*	*	*
*	*	*	*	*	*	*	*	*	*	*
*	*	*	*	*	*	*	*	*	*	*
*	*	*	*	*	*	*	*	*	*	*
*	*	*	*	*	*	*	*	*	*	*
*	*	*	*	*	*	*	*	*	*	*
*	*	*	*	*	*	*	*	*	*	*
*	*	*	*	*	*	*	*	*	*	*
*	*	*	*	*	*	*	*	*	*	*
*	*	*	*	*	*	*	*	*	*	*
*	*	*	*	*	*	*	*	*	*	*
*	*	*	*	*	*	*	*	*	*	*
*	*	*	*	*	*	*	*	*	*	*
*	*	*	*	*	*	*	*	*	*	*
*	*	*	*	*	*	*	*	*	*	*
*	*	*	*	*	*	*	*	*	*	*
*	*	*	*	*	*	*	*	*	*	*
*	*	*	*	*	*	*	*	*	*	*
*	*	*	*	*	*	*	*	*	*	*
*	*	*	*	*	*	*	*	*	*	*
*	*	*	*	*	*	*	*	*	*	*
*	*	*	*	*	*	*	*	*	*	*
*	*	*	*	*	*	*	*	*	*	*
*	*	*	*	*	*	*	*	*	*	*
*	*	*	*	*	*	*	*	*	*	*
*	*	*	*	*	*	*	*	*	*	*
*	*	*	*	*	*	*	*	*	*	*
*	*	*	*	*	*	*	*	*	*	*
*	*	*	*	*	*	*	*	*	*	*
*	*	*	*	*	*	*	*</			

NOT Indicates models for which Part is suitable.
When occurs in more than one column in same line Part is interchangeable.

MODELS

[illegible]

When ordering quote Description and Part Number from

Correct Column for your Horse Power and Model.

Illustration No.	DESCRIPTION OF PART.	Price, £ s. d.	9.95 h.p.	3.49 h.p.	4.98 h.p.	2.48 h.p.
Rear Wheel—Continued.						
N.I.	Felt Washer for Adjusting Cup (as front)	2	K643	..	G206	..
	Felt Washer for Adjusting Cup (as front)	2	..	H603	..	F331
	Ball Bearings for Rear Cup (as front) 5/16 set 22	1 3	K646	..	G201	..
	Ball Bearings for Rear Cup (as front) 1/2 set 24	1 3	..	H608	..	F353
193	Rear Hub Hollow Spindle (as front for M1, M2)	6 3	K634	..	G228	..
	Rear Hub Hollow Spindle	6 0	..	H691
194	Centre Spindle for Hollow Spindle (as front for M1 & M2)	2 6	K635	..	G227	..
	Centre Spindle for Hollow Spindle	2 6	..	H695
207	Rear Solid Spindle	7 6	F300
208	Cones for Rear Solid Spindle each..	2 0	F300-1
N.I.	Washer for Centre Spindle for Hollow Spindle 1/2 Plain	1	W A1020	..	G155-2	..
	Washer for Centre Spindle for Hollow Spindle 7/16 Plain	1	..	H401	..	F119
	Nut for Centre Spindle 1/2 x 24 x 1-17/32 x 53/64 (Blind)	3	K697	..	G220	..
	Nut for Centre Spindle 7/16 x 20 x 1 x 45/64	3	..	Y A520
209	Nut for Centre Spindle 7/16 x 20 x 7/16 x 45/64	3	W A1060
195	Rear Wheel Distance Piece (short)	3	K654	..	G247	..
	Rear Wheel Distance Piece (outside Shaped)	4	K655	..	G248	..
210	Rear Wheel Distance Piece	3	..	H740
	Rear Wheel Distance Piece (Long)	3	F301
	Rear Wheel Distance Piece (short)	3	F302
	Hub Sleeve Bolt (as front for M1, 2)	2 9	K657	G250
206	Hub Sleeve Bolt	2 3	..	H713

NOT When * Indicates models for which Part is suitable. * occurs in more than one column in same line Part is interchangeable.

MODELS											For Dealer's Use
M1 Twin	M2 Twin	M3 s.v.	M4 s.v.	M5 s.v.	M6 o.h.v.	M7 o.h.c.	M8 o.h.v.	M9 s.v.	M10 o.h.c.	M12 s.v.	
*	*	*	*	*	*	*	*	*	*	*	
*	*	*	*	*	*	*	*	*	*	*	
*	*	*	*	*	*	*	*	*	*	*	
*	*	*	*	*	*	*	*	*	*	*	
*	*	*	*	*	*	*	*	*	*	*	
*	*	*	*	*	*	*	*	*	*	*	
*	*	*	*	*	*	*	*	*	*	*	
*	*	*	*	*	*	*	*	*	*	*	
*	*	*	*	*	*	*	*	*	*	*	
*	*	*	*	*	*	*	*	*	*	*	
*	*	*	*	*	*	*	*	*	*	*	
*	*	*	*	*	*	*	*	*	*	*	
*	*	*	*	*	*	*	*	*	*	*	
*	*	*	*	*	*	*	*	*	*	*	
*	*	*	*	*	*	*	*	*	*	*	
*	*	*	*	*	*	*	*	*	*	*	
*	*	*	*	*	*	*	*	*	*	*	
*	*	*	*	*	*	*	*	*	*	*	
*	*	*	*	*	*	*	*	*	*	*	
*	*	*	*	*	*	*	*	*	*	*	
*	*	*	*	*	*	*	*	*	*	*	
*	*	*	*	*	*	*	*	*	*	*	
*	*	*	*	*	*	*	*	*	*	*	
*	*	*	*	*	*	*	*	*	*	*	
*	*	*	*	*	*	*	*	*	*	*	
*	*	*	*	*	*	*	*	*	*	*	
*	*	*	*	*	*	*	*	*	*	*	
*	*	*	*	*	*	*	*	*	*	*	
*	*	*	*	*	*	*	*	*	*	*	
*	*	*	*	*	*	*	*	*	*	*	
*	*	*	*	*	*	*	*	*	*	*	
*	*	*	*	*	*	*	*	*	*	*	
*	*	*	*	*	*	*	*	*	*	*	
*	*	*	*	*	*	*	*	*	*	*	
*	*	*	*	*	*	*	*	*	*	*	
*	*	*	*	*	*	*	*	*	*	*	
*	*	*	*	*	*	*	*	*	*	*	
*	*	*	*	*	*	*	*	*	*	*	
*	*	*	*	*	*	*	*	*	*	*	
*	*	*	*	*	*	*	*	*	*	*	
*	*	*	*	*	*	*	*	*	*	*	
*	*	*	*	*	*	*	*	*	*	*	
*	*	*	*	*	*	*	*	*	*	*	
*	*	*	*	*	*	*	*	*	*	*	
*	*	*	*	*	*	*	*	*	*	*	
*	*	*	*	*	*	*	*	*	*	*	
*	*	*	*	*	*	*	*	*	*	*	
*	*	*	*	*	*	*	*	*	*	*	
*	*	*	*	*	*	*	*	*	*	*	
*	*	*	*	*	*	*	*	*	*	*	
*	*	*	*	*	*	*	*	*	*	*	
*	*	*	*	*	*	*	*	*	*	*	
*	*	*	*	*	*	*	*	*	*	*	
*	*	*	*	*	*	*	*	*	*	*	
*	*	*	*	*	*	*	*	*	*	*	
*	*	*	*	*	*	*	*	*	*	*	
*	*	*	*	*	*	*	*	*	*	*	
*	*	*	*	*	*	*	*	*	*	*	
*	*	*	*	*	*	*	*	*	*	*	
*	*	*	*	*	*	*	*	*	*	*	
*	*	*	*	*	*	*	*	*	*	*	
*	*	*	*	*	*	*	*	*	*	*	
*	*	*	*	*	*	*	*	*	*	*	
*	*	*	*	*	*	*	*	*	*	*	
*	*	*	*	*	*	*	*	*	*	*	
*	*	*	*	*	*	*	*	*	*	*	
*	*	*	*	*	*	*	*	*	*	*	
*	*	*	*	*	*	*	*	*	*	*	
*	*	*	*	*	*	*	*	*	*	*	
*	*	*	*	*	*	*	*	*	*	*	
*	*	*	*	*	*	*	*	*	*	*	
*	*	*	*	*	*	*	*	*	*	*	
*	*	*	*	*	*	*	*	*	*	*	
*	*	*	*	*	*	*	*	*	*	*	
*	*	*	*	*	*	*	*	*	*	*	
*	*	*	*	*	*	*	*	*	*	*	
*	*	*	*	*	*	*	*	*	*	*	
*	*	*	*	*	*	*	*	*	*	*	
*	*	*	*	*	*	*	*	*	*	*	
*	*	*	*	*	*	*	*	*	*	*	
*	*	*	*	*	*	*	*	*	*	*	
*	*	*	*	*	*	*	*	*	*	*	
*	*	*	*	*	*	*	*	*	*	*	
*	*	*	*	*	*	*	*	*	*	*	
*	*	*	*	*	*	*	*	*	*	*	
*	*	*	*	*	*	*	*	*	*	*	
*	*	*	*	*	*	*	*	*	*	*	
*	*	*	*	*	*	*	*	*	*	*	
*	*	*	*	*	*	*	*	*	*	*	
*	*	*	*	*	*	*	*	*	*	*	
*	*	*	*	*	*	*	*	*	*	*	
*	*	*	*	*	*	*	*	*	*	*	
*	*	*	*	*	*	*	*	*	*	*	
*	*	*	*	*	*	*	*	*	*	*	
*	*	*	*	*	*	*	*	*	*	*	
*	*	*	*	*	*	*	*	*	*	*	
*	*	*	*	*	*	*	*	*	*	*	
*	*	*	*	*	*	*	*	*	*	*	
*	*	*	*	*	*	*	*	*	*	*	
*	*	*	*	*	*	*	*	*	*	*	
*	*	*	*	*	*	*	*	*	*	*	
*	*</										

When	Ordering	Quote Description	and Part Number	from

NO: * Indicates models for which Part is suitable.
When * occurs in more than one column in same line Part is interchangeable.

Correct Column for your Horse Power and Model.

Correct Column for your Horse Power and Model.				P A R T N U M B E R			
Illustration No.	DESCRIPTION OF PART.	Price, £ s. d.	9.96 h.p.	3.49 h.p.	4.98 h.p.	2.43 h.p.	
Rear Brake.							
211	Rear Brake Drum Sprocket, with Centre fitted	1 15 9	K722	..	G240-A	..	
	Rear Brake Drum Sprocket ..	1 17 3	G241-1	..	
	Rear Brake Drum Sprocket, with Centre fitted	1 11 3	..	H701-1	
	Rear Brake Drum Sprocket ..	1 8 9	..	H705-1	
	Rear Brake Drum Sprocket ..	1 4 3	F310	
214	Plain Driving Stud ..	2	K694	..	G244	..	
	Plain Driving Stud ..	2	..	H710	
	Screwed Driving Stud ..	4	K727	..	G243	..	
	Screwed Driving Bolt ..	4	G243-2	..	
	Screwed Driving Stud ..	4	..	H711	
205	Screwed Driving Bolt ..	4	..	WA2400	
	Screwed Driving Bolt ..	4	F326	
	Washer for Screwed Driving Bolt $\frac{3}{8}$ Single Spring	1	..	H160	
	Washer for Screwed Driving Bolt $\frac{7}{16}$ Single Spring	1	WA1520	..	
	Nut for Screwed Driving Bolt $\frac{3}{8}$ x 26 x $\frac{1}{4}$ x 39/64	2	..	H290	
N.I.	Nut for Screwed Driving Bolt $\frac{7}{16}$ x 26 x 17/64 x 45/64	2	G254-2	..	
	Nut for Screwed Driving Bolt $\frac{5}{16}$ x 20 x 3/16 x 17/32	2	F76	
	Rear Brake Drum Centre only	1 9	K688	..	G242-1	..	
	Rear Brake Drum Centre only	1 6	..	H705-1	
	Pins for retaining Brake Drum Centres $\frac{3}{16}$ x $\frac{1}{2}$ x 24	1	K29	H413	G121-1	..	
196	Rear Brake Shoes, with Linings (per pair)	12 9	WA2600	..	WA2600	..	
	Rear Brake Shoes, with Linings (per pair)	9 3	..	WA2620	
	Rear Brake Shoes, with Linings (per pair)	8 0	WA2640	
	Top Rear Brake Shoe, with Lining	6 3	WA2660	..	WA2660	..	
	Top Rear Brake Shoe, with Lining	4 6	..	WA2680	
197	Top Rear Brake Shoe, with Lining	4 0	WA2700	

MODELS

[illegible]

When Ordering Quote Description and Part Number from
Correct Column for your Horse Power and Model.

Illustration No.	DESCRIPTION OF PART.	Price, £ s. d.	9.06 h.p.	3.49 h.p.	4.98 h.p.	2.48 h.p.
Rear Brake—Continued.						
N.I.	Nut for Rear Brake Expander Spindle $\frac{3}{8} \times 26 \times \frac{3}{8} \times 9/16$	2	K32	..	G27	..
	Nut for Rear Brake Expander Spindle $5/16 \times 20 \times \frac{1}{4} \times 19/32$	1	..	H320	..	ZA6020
	Lever for Expander Spindle	2 5	K746	..	G236	..
204	Lever for Expander Spindle	2 3	..	H735
	Lever for Expander Spindle	2 3	F324
	Return Spring for Expander Spindle	4	..	H736	..	F325
213	Return Spring for Expander Spindle	4	G240	..
	Rear Dummy Spindle	1 9	K728	..	G245	..
215	Rear Dummy Spindle	1 6	..	H717

NO. * Indicates models for which Part is suitable.
When * occurs in more than one column in same line Part is interchangeable.

MODELS											For Dealer's Use.
M1 Twin	M2 Twin	M3 s.v.	M4 s.v.	M5 s.v.	M6 o.h.v.	M7 o.h.c.	M8 o.h.v.	M9 s.v.	M10 o.h.c.	M12 s.v.	
*	*	*	*	*	..	O
..	..	*	*	*	*	*	*	O
*	*	*	*	*	..	O
..	..	*	*	*	*	*	O
..	*	O
..	..	*	*	*	*	*	*	O
..	*	*	*	..	O
*	*	*	*	*	..	O
..	..	*	*	*	*	*	O

* Indicates models for which Part is suitable.
 * occurs in more than one column in same line Part is interchangeable.

Correct Column for your Horse Power and Model.

[illegible]

When Ordering Quote Description and Part Number from

Correct Column for your Horse Power and Model.

Illustration No.	DESCRIPTION OF PART.	Price. £ s. d.	9.96 h.p.	3.49 h.p.	4.98 h.p.	2.48 h.p.
Spring Forks—Continued.						
222	Steering Damper Knob only ..	4 0	RA500
	Steering Damper Knob only ..	4 0	..	RA520	RA520	..
223	Steering Damper Drawbolt, 7-3/16 (long) ..	1 6	RA540
	Steering Damper Drawbolt, 6-5/16 (long) ..	1 6	..	RA560	RA560	..
N.I.	Steering Damper Distance Piece ..	3	RA580	RA580	RA580	..
	Steering Damper Spring..	1 3	RA600
224	Steering Damper Spring..	1 3	..	RA610	RA610	..
	Steering Damper Shoes .. each	6	RA620	RA620	RA620	..
225	Steering Damper Plug ..	1 3	RA680
	Steering Damper Plug ..	1 3	..	RA700	RA700	..
N.I.	Steering Damper Washer 5/16 Plain	1	ZA6830	ZA6830	ZA6830	..
	Steering Damper Washer & Double Spring ..	1	RA740	RA740	RA740	..
226	Steering Damper Locknut 5/16 x 26 x 9/32 x 17/32	1	ZA7160	H177	G55-3	..
	Steering Damper Fibre Washer ..	3	RA780	RA780	RA780	..
227	Steering Damper Steel Washer ..	2	RA800	RA800	RA800	..
	Top Fork Link (Plain) ..	1 9	K828
228	Top Fork Link (Plain) ..	1 6	..	RA860	RA860	..
	Top Fork Link (Plain) ..	1 3	F357
229	Top Fork Link (Tapped)	1 9	K829
	Top Fork Link (Tapped)	1 6	..	RA920	RA920	..
230	Top Fork Link (Tapped)	1 3	F358
	Bottom Fork Link (Plain)	2 9	K830
231	Bottom Fork Link (Plain)	1 9	..	RA980	RA980	..
	Bottom Fork Link (Plain)	1 3	F359
232	Bottom Fork Link (Tapped)	2 9	K831
	Bottom Fork Link (Tapped)	1 9	..	RA1040	RA1040	..

NOT 4 Indicates models for which Part is suitable.
When * occurs in more than one column in same line Part is interchangeable.

MODELS											For Dealer's Use.
M1 Twin	M2 Twin	M3 s.v.	M4 s.v.	M5 s.v.	M6 o.h.v.	M7 o.h.c.	M8 o.h.v.	M9 s.v.	M10 o.h.c.	M12 s.v.	
*	*	*	*	*	*	*	*	*	*	*	*
*	*	*	*	*	*	*	*	*	*	*	*
*	*	*	*	*	*	*	*	*	*	*	*
*	*	*	*	*	*	*	*	*	*	*	*
*	*	*	*	*	*	*	*	*	*	*	*
*	*	*	*	*	*	*	*	*	*	*	*
*	*	*	*	*	*	*	*	*	*	*	*
*	*	*	*	*	*	*	*	*	*	*	*
*	*	*	*	*	*	*	*	*	*	*	*
*	*	*	*	*	*	*	*	*	*	*	*
*	*	*	*	*	*	*	*	*	*	*	*
*	*	*	*	*	*	*	*	*	*	*	*
*	*	*	*	*	*	*	*	*	*	*	*
*	*	*	*	*	*	*	*	*	*	*	*
*	*	*	*	*	*	*	*	*	*	*	*
*	*	*	*	*	*	*	*	*	*	*	*
*	*	*	*	*	*	*	*	*	*	*	*
*	*	*	*	*	*	*	*	*	*	*	*
*	*	*	*	*	*	*	*	*	*	*	*
*	*	*	*	*	*	*	*	*	*	*	*
*	*	*	*	*	*	*	*	*	*	*	*
*	*	*	*	*	*	*	*	*	*	*	*
*	*	*	*	*	*	*	*	*	*	*	*
*	*	*	*	*	*	*	*	*	*	*	*
*	*	*	*	*	*	*	*	*	*	*	*
*	*	*	*	*	*	*	*	*	*	*	*
*	*	*	*	*	*	*	*	*	*	*	*
*	*	*	*	*	*	*	*	*	*	*	*
*	*	*	*	*	*	*	*	*	*	*	*
*	*	*	*	*	*	*	*	*	*	*	*
*	*	*	*	*	*	*	*	*	*	*	*
*	*	*	*	*	*	*	*	*	*	*	*
*	*	*	*	*	*	*	*	*	*	*	*
*	*	*	*	*	*	*	*	*	*	*	*
*	*	*	*	*	*	*	*	*	*	*	*
*	*	*	*	*	*	*	*	*	*	*	*
*	*	*	*	*	*	*	*	*	*	*	*
*	*	*	*	*	*	*	*	*	*	*	*
*	*	*	*	*	*	*	*	*	*	*	*
*	*	*	*	*	*	*	*	*	*	*	*
*	*	*	*	*	*	*	*	*	*	*	*
*	*	*	*	*	*	*	*	*	*	*	*
*	*	*	*	*	*	*	*	*	*	*	*
*	*	*	*	*	*	*	*	*	*	*	*
*	*	*	*	*	*	*	*	*	*	*	*
*	*	*	*	*	*	*	*	*	*	*	*
*	*	*	*	*	*	*	*	*	*	*	*
*	*	*	*	*	*	*	*	*	*	*	*
*	*	*	*	*	*	*	*	*	*	*	*
*	*	*	*	*	*	*	*	*	*	*	*
*	*	*	*	*	*	*	*	*	*	*	*
*	*	*	*	*	*	*	*	*	*	*	*
*	*	*	*	*	*	*	*	*	*	*	*
*	*	*	*	*	*	*	*	*	*	*	*
*	*	*	*	*	*	*	*	*	*	*	*
*	*	*	*	*	*	*	*	*	*	*	*
*	*	*	*	*	*	*	*	*	*	*	*
*	*	*	*	*	*	*	*	*	*	*	*
*	*	*	*	*	*	*	*	*	*	*	*
*	*	*	*	*	*	*	*	*	*	*	*
*	*	*	*	*	*	*	*	*	*	*	*
*	*	*	*	*	*	*	*	*	*	*	*
*	*	*	*	*	*	*	*	*	*	*	*
*	*	*	*	*	*	*	*	*	*	*	*
*	*	*	*	*	*	*	*	*	*	*	*
*	*	*	*	*	*	*	*	*	*	*	*
*	*	*	*	*	*	*	*	*	*	*	*
*	*	*	*	*	*	*	*	*	*	*	*
*	*	*	*	*	*	*	*	*	*	*	*
*	*	*	*	*	*	*	*	*	*	*	*
*	*	*	*	*	*	*	*	*	*	*	*
*	*	*	*	*	*	*	*	*	*	*	*
*	*	*	*	*	*	*	*	*	*	*	*
*	*	*	*	*	*	*	*	*	*	*	*
*	*	*	*	*	*	*	*	*	*	*	*
*	*	*	*	*	*	*	*	*	*	*	*
*	*	*	*	*	*	*	*	*	*	*	*
*	*	*	*	*	*	*	*	*	*	*	*
*	*	*	*	*	*	*	*	*	*	*	*
*	*	*	*	*	*	*	*	*	*	*	*
*	*	*	*	*	*	*	*	*	*	*	*
*	*	*	*	*	*	*	*	*	*	*	*
*	*	*	*	*	*	*	*	*	*	*	*
*	*	*	*	*	*	*	*	*	*	*	*
*	*	*	*	*	*	*	*	*	*	*	*
*	*	*	*	*	*	*	*	*	*	*	*
*	*	*	*	*	*	*	*	*	*	*	*
*	*	*	*	*	*	*	*	*	*	*	*
*	*	*	*	*	*	*	*	*	*	*	*
*	*	*	*	*	*	*	*	*	*	*	*
*	*	*	*	*	*	*	*	*	*	*	*
*	*	*	*	*	*	*	*	*	*	*	*
*	*	*	*	*	*	*	*	*	*	*	*
*	*	*									

NOTL : Indicates models for which Part is suitable.
* When occurs in more than one column in same line Part is interchangeable.

Correct Column for your Horse Power and Model.

[illegible]

* Indicates models for which Part is suitable.
 * occurs in more than one column in same line Part is interchangeable.

Correct Column for your Horse Power and Model.

Correct Column for your Horse Power and Model.						
Illustration No.	DESCRIPTION OF PART.	Price, £ s. d.	P A R T N U M B E R			
			9.96 h.p.	3.49 h.p.	4.98 h.p.	2.48 h.p.
Spring Forks—Continued.						
237	Pin for Fork Spring Dish .. $\frac{3}{8}$ x 1-25/32 x 20	3	RA1580
238	Grease Nipples	3	K546	H180	G54-2	F196
239	Frame Head Race (Top or Bottom)	1 6	K846	H821	G315	..
	Frame Head Race (Top or Bottom)	1 6	F357
240	Fork Stem Race (Bottom)	1 6	K849	H823	G316	..
	Fork Stem Race (Bottom)	1 6	F363
241	Steering Collar, with Race	4 0	K854	H819	G320	..
	Steering Collar, with Race	4 0	F366
N.I.	Ball Bearings for Races, 3/16	1 3	K856	H825	G319	..
	Ball Bearings for Races, 3/16	1 2	F369

MODELS

MODELS										For Dealer's Use.											
M1	Twin	M2	Twin	M3	S.V.	M4	S.V.	M5	S.V.	M6	o.h.v.	M7	o.h.c.	M8	o.h.v.	M9	S.V.	M10	o.h.c.	M12	S.V.
..	*	*	*	..	*	*	*	..	*	*	*	..	*	..	*	..	*	..	*	..	*
..	*	*	*	..	*	*	*	..	*	*	*	..	*	..	*	..	*	..	*	..	*
..	*	*	*	..	*	*	*	..	*	*	*	..	*	..	*	..	*	..	*	..	*
..	*	*	*	..	*	*	*	..	*	*	*	..	*	..	*	..	*	..	*	..	*
..	*	*	*	..	*	*	*	..	*	*	*	..	*	..	*	..	*	..	*	..	*
..	*	*	*	..	*	*	*	..	*	*	*	..	*	..	*	..	*	..	*	..	*
..	*	*	*	..	*	*	*	..	*	*	*	..	*	..	*	..	*	..	*	..	*
..	*	*	*	..	*	*	*	..	*	*	*	..	*	..	*	..	*	..	*	..	*

When ordering Quote Description and Part Number from
Correct Column for your Horse Power and Model.

Handlebars.

Lamp Brackets.

二五

MODELS

Handlebars.

103

* Indicates models for which Part is suitable.
* occurs in more than one column in same line Part is interchangeable.

MODELS

MODELS

Illustration No.	DESCRIPTION OF PART.	Price. £ s. d.	9.96 h.p.	3.49 h.p.	4.98 h.p.	2.48 h.p.
258	Footrests—Continued. Washer for Footrest Rod, 7/16 Plain	1	WA1520	H401	G115-2	F119
259	Nut for Footrest Rod 7/16 x 26 x 17 64 x 43 64	1	WA3500	H532	G254-2	F607
	Footrest Distance Tube (Centre) 3-7/16 long x 13 16 outside diameter	6		H1186		
	Footrest Distance Tube (Centre) 3-7/16 long x 13 16 outside diameter	6		H1186		
	Footrest Distance Tube (Centre) 4; long x 13 16 outside diameter	6		RA3480		
	Footrest Distance Tube (Centre) 4-3/8 long x 13 16 outside diameter	6			RA3490	
	Footrest Distance Tube (1 used) 3-9/16 long x 13 16 outside diameter	6			RA3500	
	Footrest Distance Tube (2 used) 3-9/16 long x 13 16 outside diameter	6			RA3500	
	Footrest Distance Tube (2 used) 3-1/2 long x 13 16 outside diameter	6			RA3500	F610
	Footrest Distance Tube (Timing Side, long) 3-1/2 x 13 16 outside diameter	6	RA3560		RA3560	
	Footrest Distance Tube (Timing Side, long) 3-11/16 long x 13 16 outside diameter	6		RA3580		
	Footrest Distance Tube (Timing Side long) 3-11/16 long x 13 16 outside diameter (M6 Two Port)	6		RA3580		
	Footrest Distance Tube (Timing Side, long) 2 long x 13 16 outside diameter	4			RA3600	
	Footrest Distance Tube (Timing or Driving Side, long) 2; long x 1/2 outside diameter	4				RA3620
	Footrest Distance Tube (Timing or Driving Side, long) 3; long x 13 16 outside diameter	6		RA3640	RA3640	
	Footrest Distance Tube (Timing Side, short) 1-5/16 long x 13 16 outside diameter	3		H1188-3		
	Footrest Distance Tube (Timing Side, short) 1-7/16 long x 13 16 outside diameter	3			RA3680	
	Footrest Distance Tube (Timing Side, short) 1-1/2 long x 13 16 outside diameter	3				F611
	Footrest Distance Tube (Timing or Driving Side) (2 used) M6 2 Port, 3-11/16 long x 13 16 outside diameter	6		H1186-1		
	Footrest Distance Tube (Timing or Driving Side) M6 2 Port, 2 used, short, 9/16 long x 13 16 outside diameter	3			RA3740	
	Footrest Distance Tube (Driving Side, long) (M8, 2 Port) 4; long x 13 16 outside diameter	3			RA3760	
	Footrest Distance Tube on Brake Pedal Spindle 4; long x 13 16 outside diameter	6		RA3780	RA3780	
	Footrest Distance Tube, 2; long x 13 16 outside diameter	4	RA3800			
	Footrest Engine Plate (2 used)	1 3	RA3820			
	Footrest Engine Plate (R.H. or L.H.) (2 used)	1 3		RA3840		
	Footrest Engine Plate (R.H. or L.H.) (2 used) (M6, 2 Port)	1 3			RA3840	

This scan is explicit for non-commercial use and is not intended for financial or material gain by anyone

[illegible]

NOTE * Indicates models for which Part is suitable. Indicates models for which Part is interchangeable. When * occurs in more than one column in same line Part is interchangeable.

NOTE * Indicates models for which Part is suitable. † Indicates models for which Part is interchangeable. ‡ Part is interchangeable.

Correct Column for your Horse Power and Model.

MODELS

Correct Column for your Horse Power and Model.			
Illustration No.	DESCRIPTION OF PART.	Price, £ s. d.	PART NUMBER
276	Brake Pedal and Fittings (Continued).		
	Nut for Brake Pedal Spindle $\frac{1}{2} \times 24 \times 5/16 \times 43/64$	1	RA6560
	Cotter for Brake Pedal Spindle	1	RA6580
N.I.	Washer for Brake Pedal Spindle $\frac{1}{2}$ Double Spring	1	RA6610
	Rear Brake Rod	1 9	RA6620
	Rear Brake Rod	1 9	RA6640
277	Rear Brake Rod	1 9	RA6650
	Rear Brake Rod	1 9	RA6680
	Rear Brake Rod	1 9	RA6720
	Rear Brake Rod	1 9	RA6740
	Yoke End for Rear Brake Rod	7	YA4300
278	Pin for Rear Brake Rod	1	YA4320
N.I.	Cotter for Rear Brake Rod	1	YA4300
	Adjusting Spring for Rear Brake Rod (Plated)	2	RA6840
280	Milled Nut for Adjusting Spring for Rear Brake Rod (Plated)	1 6	RA6860
281	Clip for Adjusting Spring for Rear Brake Rod (Plated)	1 3	RA6880
282	Washer for Adjusting Clip for Rear Brake Rod (Plated)	1	K111
283	Rear Brake Stop (Footboards)	3 0	RA6920
284	Rear Brake Stop (Footrests)	1 0	RA6940
	Rear Brake Stop	3 0	RA6960

[illegible]

112

115

* Indicates models for which Part is suitable.
 † occurs in more than one column in same line. Part is interchangeable.

Correct Column for your Horse Power and Model.

Correct Column for your Horse Power and Model.

Correct Columns for your Horse Power and Model.			P A R T N U M B E R			
Illustration No.	DESCRIPTION OF PART.	Price, £ s. d.	9.96 h.p.	3.40 h.p.	4.98 h.p.	2.48 h.p.
285	Front Mudguard.					
	Front Mudguard complete less Stays	1 2 6	MA1
	Front Mudguard complete less Stays	17 6	..	MA20
	Front Mudguard complete less Stays	8 6	..	MA40
	Front Mudguard Blade only	6 0	..	MA60
	Front Mudguard complete less Stays	18 6	MA80	..
	Front Mudguard Blade only	8 6	MA100	..
	Front Mudguard Blade only	8 6	MA120
	Stays for Front Mudguard	1 9	MA200
	Stays for Front Mudguard (Short)	1 9	..	MA220	..	MA250
286	Stays for Front Mudguard (Short)	1 9	MA240	..
	Stays for Front Mudguard (Long)	2 0	MA260
	Front Mudguard Stay (Front)	2 6	MA280	..
	Front Mudguard Stay (Rear)	2 6	MA300	..
	Front Mudguard Stay (Front)	2 6	..	MA320
	Front Mudguard Stay (Rear)	2 6	..	MA340
	Pin for Fork End of Front Mudguard Stay 5 16 x 1 x 20	2	K559
	Pin for Fork End of Front Mudguard Stay 1 x 1 x 20	2	..	MA380
	Pin for Fork End of Front Mudguard Stay 1 x 1 x 20	2	..	MA400
	Pin for Fork End of Front Mudguard Stay 1 x 1 x 20	2	MA420
287	Pin for Rear Stay for Fork End, 5 16 x 1 x 20	2	..	ZA7870	ZA7870	..
	Washer for Stay Pin, 5 16 Single Spring	1	K599	H163	ZA6040	..
	Washer for Stay Pin, 1 Single Spring	1	..	MA500	MA500	F155
	Pin for Front Mudguard Stay, 1 x 1 x 20	2	K924	..	MA360	..
	Pin for Front Mudguard Stay, 1 x 1 x 20	2	..	MA400	MA400	..
	Washer for Front Mudguard Stay Pin 1 Plain 1 Single Spring	1	K1111	H134	G27-2	..
	Washer for Front Mudguard Stay Pin 1 Single Spring	1	MA500	MA500	MA500	..

二六

— — — — —

2

$$\vdots$$

116

117

NOTE
When
() Indicates models for which Part is suitable.
* Indicates models for which Part is interchangeable
occurs in more than one column in same line Part is interchangeable

Correct Column for your Horse Power and Model.

Correct Column for your Horse Power and Model.

Illustration No.	DESCRIPTION OF PART.	Price, £ s. d.	9.06 h.p.	3.40 h.p.	4.96 h.p.	2.48 h.p.
289	Rear Mudguard (Continued).					
	Outside Strap for Stand Clip ..	1 9	..	H878
	Outside Strap for Stand Clip ..	2 6	MA1320	..
	Spiral Spring for Stand Clip ..	1	K899	H880	G333-2	F 402
	Washer for Spiral Spring for Stand Clip 3/16 Plain	1	ZA2230	ZA2230	ZA2230	ZA2230
	Nut for Spiral Spring for Stand Clip 3/16 x 24 x 5/32 x 11/32	1	MA900	MA900	MA900	MA900
	Pin for Stand Strap 1 x 1/4 x 20 ..	2	MA1400	MA1400	MA1400	MA1400
	Nut for Stand Strap Pin, 1 x 20 x 3/16 x 7/16 ..	1	K110	H133	G27-1	F34
	Washer for Stand Strap Pin 1/4 Single Spring (Square)	1	MA1440	MA1440	MA1440	MA1440
	Long Strap inside Mudguard ..	1 6	MA1500	..	MA1500	..
	Long Strap inside Mudguard ..	1 6	..	MA1520
	Long Strap inside Mudguard ..	1 6	..	MA1540
N.I.	Long Strap inside Mudguard ..	1 6	MA1560	..
	Long Strap inside Mudguard ..	1 6	MA1580
	Pin for Long Strap inside Mudguard 1/4 x 1/4 x 20	2	MA1600	MA1600	MA1600	MA1600
	Nut for Pin for Long Strap 1/4 x 20 x 3/16 x 7/16	1	K110	H133	G27-1	F34
	Washer for Pin for Long Strap 1/4 Single Spring (Square)	1	MA1440	MA1440	MA1440	MA1440
	Pin for Mudguard Bottom Bracket 5/16 x 1/2 x 20	2	K559	H537	G173-8	RA3140
	Washer for Pin for Mudguard Bottom Bracket 5/16 Single Spring	1	K299	H163	ZA6040	F77
	Pin for Mudguard Seat Stay Clip, 1 x 1/2 x 20 ..	2	K924	MA380	MA380	MA380
	Nut for Mudguard Seat Stay Clip .. 1/4 x 20 x 3/16 x 7/16	1	K110	H133	G27-1	F34
	Washer for Mudguard Seat Stay Clip 1/4 Single Spring (Square)	1	MA1440	MA1440	MA1440	MA1440
	Mudguard Stay with Lifting Handle	7 6	..	MA1800
	Mudguard Stay with Lifting Handle	7 6	MA1820	..
N.I.	Mudguard Stay without Lifting Handle (L.H.)	1 6	..	MA1840
	Mudguard Stay without Lifting Handle (R.H.)	1 6	MA1860	..
	Mudguard Stay without Lifting Handle (R.H.)	1 6	..	MA1880
	Mudguard Stay without Lifting Handle (R.H.)	1 6	MA1900	..

二、

NO * Indicates models for which Part is suitable.

MODELS

120

121

Indicates models for which Part is suitable.
occurs in more than one column in same line Part is interchangeable

Part is suitable.

W/ Ordering Quote Description and Part Number from

Correct Column for your Horse Power and Model.

Illustration No.	DESCRIPTION OF PART.	Price, £ s. d.	9.96 h.p.	3.49 h.p.	4.98 h.p.	2.48 h.p.
Carriers.						
295	Carrier	2 6 0	MA2600	..	MA2600	..
	Carrier	1 17 6	..	MA2620
	Carrier	1 4 3	MA2640
296	End Pins for fixing Carrier, $\frac{5}{8}$ x 11 16 x 20	2	K1005	..	G62	..
	End Pins for fixing Carrier, $\frac{5}{16}$ x $\frac{1}{2}$ x 20	2	..	ZA8840	..	F320
	Washer for Pins for Carrier, $\frac{3}{8}$ Single Spring	1	K300	..	G79-1	..
N.I.	Washer for Pins for Carrier, $\frac{5}{16}$ Single Spring	1	..	H163	..	F77
Number Plates.						
297	Front Number Plate only	1 6	K950	H923	G277	F440
293	Clips for Front Number Plate .. .	1 4	K951	H924	G278	F441
299	Pin for Clip for Front Number Plate $\frac{3}{16}$ x $\frac{1}{2}$ x 24	1	K429	H413	G121-1	F126
N.I.	Nut for Clip for Front Number Plate $\frac{3}{16}$ x 24 x $\frac{5}{32}$ x 11 32	1	MA900	MA900	MA900	MA900
	Washer for Clip for Front Number Plate $\frac{3}{16}$ Single Spring	1	ZA7760	ZA7760	ZA7760	ZA7760
	Pin for holding Front Number Plate into Clip $\frac{3}{16}$ x $\frac{1}{2}$ x 24	1	K429	H413	G121-1	F126
N.I.	Nut for holding Front Number Plate into Clip $\frac{3}{16}$ x 24 x $\frac{5}{32}$ x 11 32	1	MA900	MA900	MA900	MA900
N.I.	Rear Number Plate only	1 6	K953	H926	G280	F443
	Rear Number Plate only for Electric Lamp	1 6	K954	H927	G280-1	F444
	Pin for Rear Number Plate $\frac{1}{2}$ x $\frac{1}{2}$ x 20	1	MA400	MA400	MA400	MA400
N.I.	Pin for Rear Number Plate, $\frac{1}{2}$ x $\frac{1}{2}$ x 20	1	..	MA380	MA380	..
	Nut for Pin for Rear Number Plate $\frac{1}{2}$ x 20 x $\frac{3}{16}$ x 7 16	1	K110	H133	G27-1	F34
	Washer for Nut for Rear Number Plate $\frac{1}{2}$ Single Spring	1	MA500	MA500	MA500	MA500
Pannier Tool Cases.						
300	Pannier Tool Case, with fittings	8 0	K1011	..	G282	..
	Pannier Tool Case, with fittings	6 0	..	H965	..	F470
	Pannier Tool Case only	6 3	K1013	..	G282-1	..
	Pannier Tool Case only	6 3	..	H967	..	F471

When entering Quote Description and Part Number from Correct Column for your Horse Power and Model.

Illustration No.	DESCRIPTION OF PART.	Price, £ s. d.	9.95 h.p.	3.49 h.p.	4.98 h.p.	2.48 h.p.
	Petrol and Oil Pipes (Continued).					
310	Oil Pipe from Tank to Pump, with Nipples and Unions (long)	5 6	TA840	TA840	TA840	TA840
311	Oil Pipe from Tank to Pump with Nipples and Unions (short)	4 9	TA860	TA860	TA860	TA860
312	Rubber Connection for Oil Pipes ..	8	TA880	TA880	TA880	TA880
	Oil Delivery Pipe from Pump to Driving Side of Engine, with Nipples and Unions	6 6	TA900
	Oil Delivery Pipe from Pump to Driving Side of Engine, with Nipples and Unions	6 6	..	TA920
	Oil Delivery Pipe from Pump to Driving Side of Engine, with Nipples and Unions	6 6	TA940	..
	Oil Delivery Pipe from Pump to Driving Side of Engine, with Nipples and Unions	6 6	TA950
	Nipple only, $\frac{1}{2}$ in.	3	TA740	TA740	TA740	TA740
	Union Nut only, $\frac{1}{2}$ in.	4	TA760	TA760	TA760	TA760
	Screwed Connection for Oil Delivery Pipe ..	10	K270	H326	G72-2	ZA6140
	Washer for Screwed Connection for Oil Delivery Pipe (fibre)	2	TA260	TA260	TA260	TA260
	Timing Side Release Pipe from Magneto Chain Cover, with Nipples and Unions	1 0	ZA6100	ZA6100	ZA6100	ZA6100
	Oil Release Pipe with Nipple and Union ..	2 0	K259
	Oil Release Pipe with Nipple and Union ..	2 0	..	ZA6070	ZA6070	ZA6070
	Filter for Oil Tank ..	1 9	TA1120	TA1120	TA1120	TA1120
	Suction Oil Pipe from Crankcase to Pump	2 0	TA1140
	Suction Oil Pipe from Crankcase to Pump	2 0	..	TA1150
	Suction Oil Pipe from Crankcase to Pump	2 0	TA1160	..
	Suction Oil Pipe from Crankcase to Pump	1 6	TA1170

Speedometers.

All Models except M7 and M10 are fitted with 80 M.P.H. Type. M7 and M10 are fitted with 100 M.P.H. Type. The Tanks fitted as standard to M5 and M12 Models are not suitable for Speedometers.

Speedometer, complete with Cable and Gearbox (Trip Type) (Wide Ratio)	2	5	0	TA1200
Speedometer, complete with Cable and Gearbox (Trip Type) (Wide Ratio)	2	5	0	TA1220
Speedometer, complete with Cable and Gearbox (Trip Type) (Close Ratio)	2	5	0	TA1240

之

* Indicates models for which Part is suitable.
† occurs in more than one column in same line Part is interchangeable

MODELS

[illegible]

er. Enter Quote Description and Part Number from Correct Column for year Horse Power and Model.

Speedometers—Continued.

315

家

NOTE When ^a Indicates models for which Part is suitable. occurs in more than one column in same line Part is interchangeable.

NOTE When ^a Indicates models for which Part is suitable. occurs in more than one column in same line Part is interchangeable.

MODELS

M1 Twin	M2 Twin
------------	------------

**W. Ordering Quote Description and Part Number from
Correct Column for your Horse Power and Model.**

Illustration No.	DESCRIPTION OF PART.	Price. £ s. d.	9.96 h.p.	3.49 h.p.	4.98 h.p.	2.43 h.p.
	Control Cables					
	(Continued).					
	Plain Pin for Shackle for Front Brake Control 1 x 1 x 8 head diameter	1	K1181
	Cotter for Shackle for Front Brake Control ..	1	TA2500
	Shackle for Front Brake Control ..	5	..	TA2840	TA2840	TA2840
	Plain Pin for Shackle for Front Brake Control 3/16 x 9/16 x 5/16 head diameter	1	..	TA2860	TA2860	TA2860
	Cotter for Shackle for Front Brake Control ..	1	TA2880	TA2880	TA2880	TA2880
	Clutch Control Cable complete ..	5 0	TA2900
	Clutch Control Cable complete ..	4 8	..	TA2920
	Clutch Control Cable complete ..	4 6	G397	..
	Clutch Control Cable complete ..	4 0	TA2960
	Clutch Control Cable Inner Wire 4ft. 9in. ..	1 3	TA2980
	Clutch Control Cable Inner Wire 4ft. 3 1/2 in. ..	1 0	..	TA3000
	Clutch Control Cable Inner Wire 4ft. 7 1/2 in. ..	1 0	G397-2	..
	Clutch Control Cable Inner Wire 4ft. 6 1/2 in. ..	1 0	TA3040
	Clutch Control Cable Outer Casing 4ft. 5 1/2 in. ..	3 6	TA3060
	Clutch Control Cable Outer Casing 4ft. ..	3 0	..	TA3080
	Clutch Control Cable Outer Casing 4ft. 3 1/2 in. ..	3 3	G397-1	..
	Clutch Control Cable Outer Casing 3ft. 9in. ..	2 9	TA3120
	Nipples only for Inner Wire ..	2	K1174	H1130	G397-4	F590
	Magneto Control Cable complete ..	2 9	K1197
	Magneto Control Cable complete ..	2 9	..	TA3180	TA3180	..
	Magneto Control Cable complete ..	2 6	TA3200
	Magneto Control Cable Inner Wire 3ft. 1 1/2 in. ..	8	K1199
	Magneto Control Cable Inner Wire 3ft. 2 1/2 in. ..	8	..	TA3240	TA3240	..
	Magneto Control Cable Inner Wire 2ft. 1 1/2 in. ..	7	TA3260
	Magneto Control Cable Outer Casing 2ft. 10in. ..	1 10	K1201
	Magneto Control Cable Outer Casing 2ft. 11in. ..	1 10	..	TA3300	TA3300	..
	Magneto Control Cable Outer Casing 2ft. 7 1/2 in. ..	1 9	TA3320

36

**W. Ordering Quote Description and Part Number from
Correct Column for your Horse Power and Model.**

Illustration No.	DESCRIPTION OF PART.	Price. £ s. d.	9.96 h.p.	3.49 h.p.	4.98 h.p.	2.43 h.p.
	Control Cables					
	(Continued).					
	Plain Pin for Shackle for Front Brake Control 1 x 1 x 8 head diameter	1	K1181
	Cotter for Shackle for Front Brake Control ..	1	TA2500
	Shackle for Front Brake Control ..	5	..	TA2840	TA2840	TA2840
	Plain Pin for Shackle for Front Brake Control 3/16 x 9/16 x 5/16 head diameter	1	..	TA2860	TA2860	TA2860
	Cotter for Shackle for Front Brake Control ..	1	TA2880	TA2880	TA2880	TA2880
	Clutch Control Cable complete ..	5 0	TA2900
	Clutch Control Cable complete ..	4 8	..	TA2920
	Clutch Control Cable complete ..	4 6	G397	..
	Clutch Control Cable complete ..	4 0	TA2960
	Clutch Control Cable Inner Wire 4ft. 9in. ..	1 3	TA2980
	Clutch Control Cable Inner Wire 4ft. 3 1/2 in. ..	1 0	..	TA3000
	Clutch Control Cable Inner Wire 4ft. 7 1/2 in. ..	1 0	G397-2	..
	Clutch Control Cable Inner Wire 4ft. 6 1/2 in. ..	1 0	TA3040
	Clutch Control Cable Outer Casing 4ft. 5 1/2 in. ..	3 6	TA3060
	Clutch Control Cable Outer Casing 4ft. ..	3 0	..	TA3080
	Clutch Control Cable Outer Casing 4ft. 3 1/2 in. ..	3 3	G397-1	..
	Clutch Control Cable Outer Casing 3ft. 9in. ..	2 9	TA3120
	Nipples only for Inner Wire ..	2	K1174	H1130	G397-4	F590
	Magneto Control Cable complete ..	2 9	K1197
	Magneto Control Cable complete ..	2 9	..	TA3180	TA3180	..
	Magneto Control Cable complete ..	2 6	TA3200
	Magneto Control Cable Inner Wire 3ft. 1 1/2 in. ..	8	K1199
	Magneto Control Cable Inner Wire 3ft. 2 1/2 in. ..	8	..	TA3240	TA3240	..
	Magneto Control Cable Inner Wire 2ft. 1 1/2 in. ..	7	TA3260
	Magneto Control Cable Outer Casing 2ft. 10in. ..	1 10	K1201
	Magneto Control Cable Outer Casing 2ft. 11in. ..	1 10	..	TA3300	TA3300	..
	Magneto Control Cable Outer Casing 2ft. 7 1/2 in. ..	1 9	TA3320

* Indicates models for which Part is suitable.
* occurs in more than one column in same line Part is interchangeable

137

NOT * Indicates models for which Part is suitable.

* Indicates models for which Part is suitable.
* occurs in more than one column in same line Part is interchangeable

MODELS

[illegible]

* Indicates models for which Part is suitable.
† Occurs in more than one column in same line Part is interchangeable.

Ordering	Quote Description and Part Number from
WWh.	

Correct Column for your Horse Power and Model.

[illegible]

Whe.	Ordering	Quote	Description	and	Part	Number	from

Correct Column for your Horse Power and Model.

Illustration No.	Description of Part.	Price, £ s. d.	9.05 h.p.	3.49 h.p.	4.98 h.p.	2.48 h.p.
Chaincases & Chainguards (Continued).						
354	Rear Portion of Chaincase complete (Halves not supplied separately)	1 14 6	XA340
	Rear Portion of Chainguard ..	10 9	XA360
	Rear Portion of Chainguard ..	7 6	..	XA380
	Rear Portion of Chainguard ..	10 9	XA600	..
	Rear Portion of Chainguard ..	10 9	XA620	..
	Rear Portion of Chainguard ..	6 0	XA640
355	Distance Bolt in Crankcase for Chaincase $3\frac{1}{2} \times \frac{1}{2} \times 20$	6	XA660
	Distance Bolt in Crankcase for Chaincase $2\frac{1}{2} \times \frac{1}{2} \times 20$	4	..	H950
	Distance Bolt in Crankcase for Chaincase $3\frac{1}{2} \times \frac{1}{2} \times 26$	6	XA700	..
	Distance Bolt in Crankcase for Chaincase $5/16 \times 2\frac{1}{2} \times 20$	4	F452
	Distance Spool for Chaincase ..	10	K980
	Distance Spool for Chaincase ..	4	..	H956
N.I.	Distance Spool for Chaincase ..	4	G285	..
	Distance Spool for Chaincase ..	4	F453
	Nut for Distance Bolt for Chaincase (Back) $\frac{3}{4} \times 26 \times \frac{1}{2} \times 9/16$	2	K32	..	G2-7	..
	Nut for Distance Bolt for Chaincase (Back) $\frac{3}{4} \times 26 \times \frac{1}{2} \times \frac{9}{8}$	2	..	ZA7150
	Nut for Distance Bolt for Chaincase (Front) $\frac{3}{4} \times 26 \times \frac{1}{2} \times \frac{9}{8}$	2	ZA7150	ZA7150	ZA7150	..
	Washer for Nut in Crankcase $\frac{3}{4}$ Plain	1	WA3200	WA3200
N.I.	Washer for Nut in Crankcase $\frac{3}{4}$ Double Spring	2	RA740	..
	Washer for Nut in Crankcase $5/16$ Plain	1	ZA6830
	Clip on Chainstay for Chaincase ..	3	ZA7080	..	G354	..
	Clip on Chainstay for Chaincase ..	3	..	H1244
	Pin for Clip on Chainstay for Chaincase $5/16 \times \frac{1}{2} \times 20$	2	ZA8840	ZA8840	ZA8840	..
	Nut for Clip on Chainstay for Chaincase $5/16 \times 20 \times \frac{1}{2} \times 19/32$	1	K707	H320	G212	..
N.I.	Washer for Clip on Chainstay for Chaincase $5/16$ Single Spring	1	K299	H163	ZA6040	..
	Pin for fixing Rear Portion of Chaincase to Anchor Plate $5/16 \times \frac{9}{8} \times 20 \times \frac{1}{2}$ Shouldered	2	K982

Chaincases & Chainguards

(Continued).

**Rear Portion of Chaincase complete
(Halves not supplied separately)**

Rear Portion of Chainguard

Rear Portion of Chaininguard

Rear Portion of Chainguard

Rear Portion of Chainguard

Peer Portion of Chingizid

Distance Bolt in Compliance for

34 x 3 x 26
 Dimensions: 34 x 3 x 26

21 x 3 x 26 .
Diameter Bolt is Consistent for

37 x 4 x 26 -

5/16 x 2 1/2 x 20

100

100

...the content of

1914-1915

26 x 9/16

$$\frac{1}{2} \times 26 \times 1 \times 4$$
$$\frac{2}{3} \times 26 \times \frac{1}{4} \times \frac{1}{2}$$

AA JAHST MOY JNN III

WASHER FOR NUT IN CIRCULATING

Washer for null in Creakcase

NO DIRECT ATTENTION

Clip on Chainstay for Chain

Pin for Clip on Chainstay for
5'16 x 1 x 20

Nut for Clip on Chainstay for
5/16 x 20 x 1/2 x 19/32

Washer for Clip on Chainstay
5/16 Single Spring

Pin for fixing Rear Portion
Anchor Plate $5\frac{1}{16} \times \frac{3}{8} \times 2$

✱ NOT ✱ Indicates models for which Part is suitable.
✱ ✱ ✱ When occurs in more than one column in same line Part is interchangeable!

MODELS

[illegible]

NC) * Indicates models for which Part is suitable
When: * occurs in more than one column in same line Part is interchangeable.

**When Ordering Quote Description and Part Number from
Correct Column for your Horse Power and Model.**

Illustration No.	DESCRIPTION OF PART.	Price, cts.	9.96 h.p.	3.49 h.p.	3.49 h.p.	4.98 h.p.
	Chaincases & Chainguards (Continued.)					
N.I.	Pin for fixing Rear Portion of Chaincase to Anchor Plate 5/16 x 3/4 x 20	1	ZA7870	..	ZA7870	..
357	Washer for Pin for fixing Rear Portion of Chaincase to Anchor Plate 5/16 Plain	1	ZA6830	..	ZA6830	..
	Pin for fixing Rear Portion of Chaincase to Carrier 5/16 x 3/4 x 20	2	..	ZA7870	..	ZA7870
N.I.	Washer for Pin for fixing Rear Portion of Chaincase to Carrier 5/16 Single Spring	1	..	H163	..	F77
358	Chaincase Disc	6	XA1120
N.I.	Oil Filler Cap for Chaincase	4	K5975	..	G259	..
	Rubber Packing for Chaincase	6	XA1160
	Legshields and Fittings NOTE—When ordering state whether for Footboards or Footrests. Legshields complete for Footboards	1 2 6	XA1500	XA1500	XA1500	..
	Legshields complete for Footrests	1 4 0	XA1540	XA1540	XA1540	..
	Legshield only R.H. for Footboard	8 3	XA1600	XA1600
	Legshield only L.H. for Footboard	8 3	XA1620	XA1620
	Legshield only R.H. for Footrest	7 9	XA1640	XA1640	XA1640	..
	Legshield only L.H. for Footrest	7 9	XA1660	XA1660	XA1660	..
	Rod for Down Tube. (Either type) 22 in. long	7	XA1680	XA1680	XA1680	..
	Nut for Rod. (Either type). 3/4 x 26 x 3/4 x 9/16	2	K32	H27-4	G2-7	..
	Washer for Nut. (Either type) 3/4 Single Spring	1	K300	H160	G79-1	..
	Large Clip for Down Tube. (Either type) 1 1/2 inside diameter	1 0	XA1700	..	XA1700	..
	Large Clip for Down Tube. (Either type) 1 1/2 inside diameter	1 0	..	XA1710
N.I.	Pin for Large Clip. (Either type) 5/16 x 1 1/4 x 20	3	K476	H47-8	G111	..
	Nut for Large Clip. (Either type) 5/16 x 20 x 1/4 x 19/32	1	K707	H320	G212	..
	Washer for Nut. (Either type) 5/16 Single Spring	1	K299	H163	XA6040	..
	Distance Tube for Long Rod. (Top). (Either type). 10 in. long	1 3	XA1750	XA1750	XA1750	..
	Bottom Rod for Footrest Type, R.H. or L.H. 10 in. long	4	XA1760	XA1760	XA1760	..
	Nut for Bottom Rod for Footrest Type 3/4 x 26 x 3/4 x 9/16	2	K32	H27-4	G2-7	..
	Washer for Nut for Footrest Type 3/4 Single Spring	1	K300	H160	G79-1	..

Correct Column for your Horse Power and Model.

Legshields and Fittings

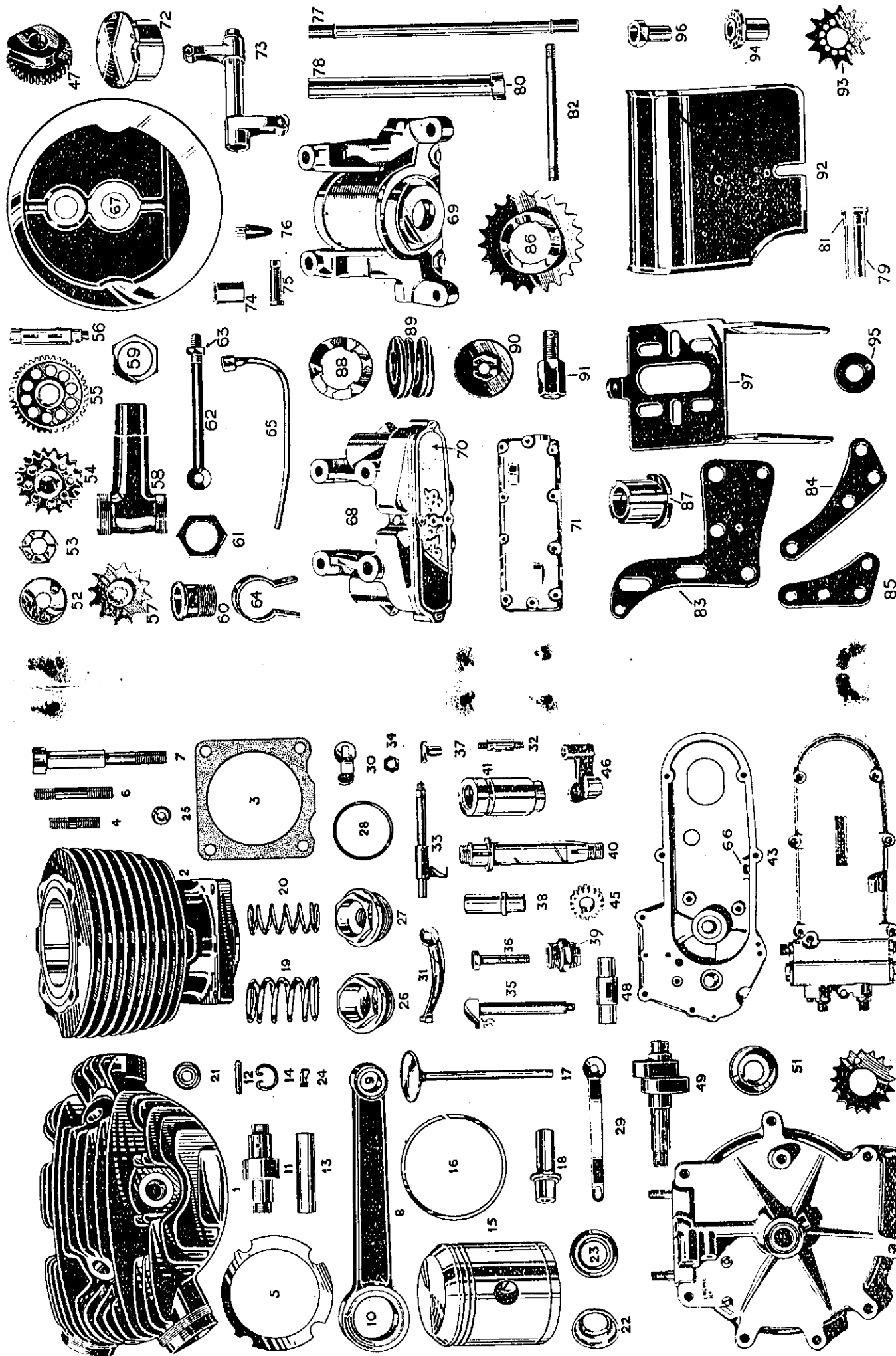
Driving Chains & Parts.

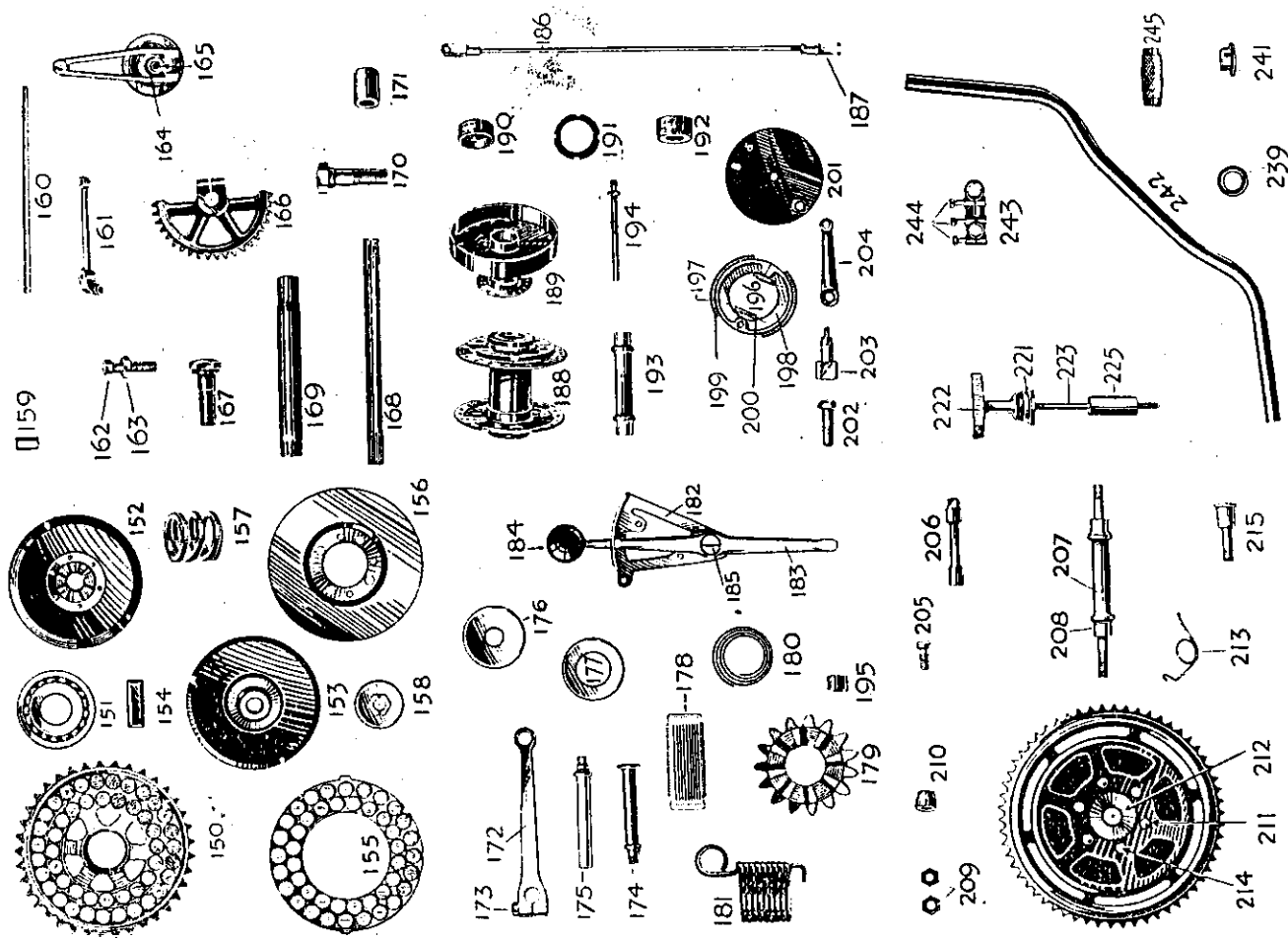
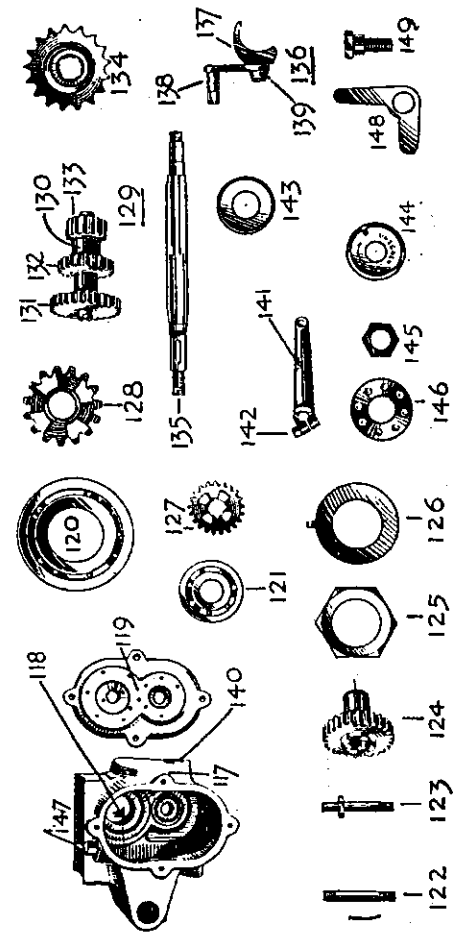
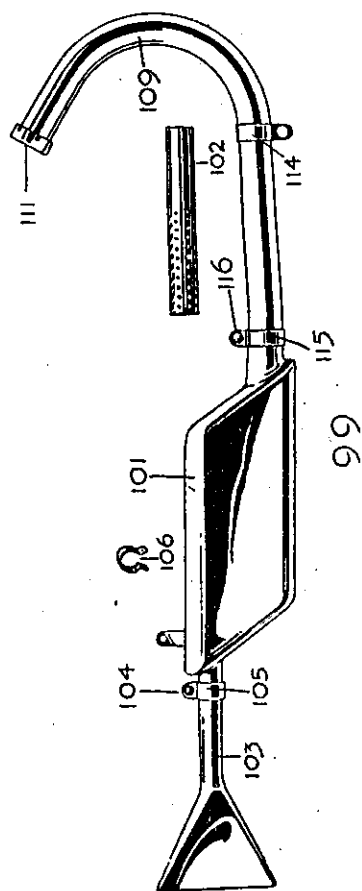
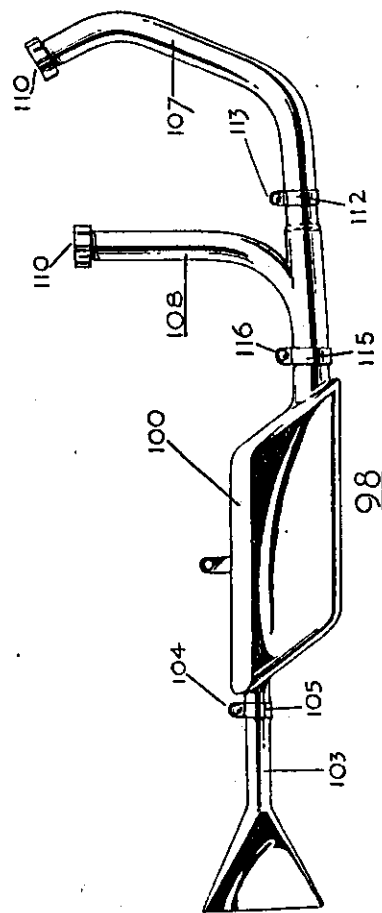
一之

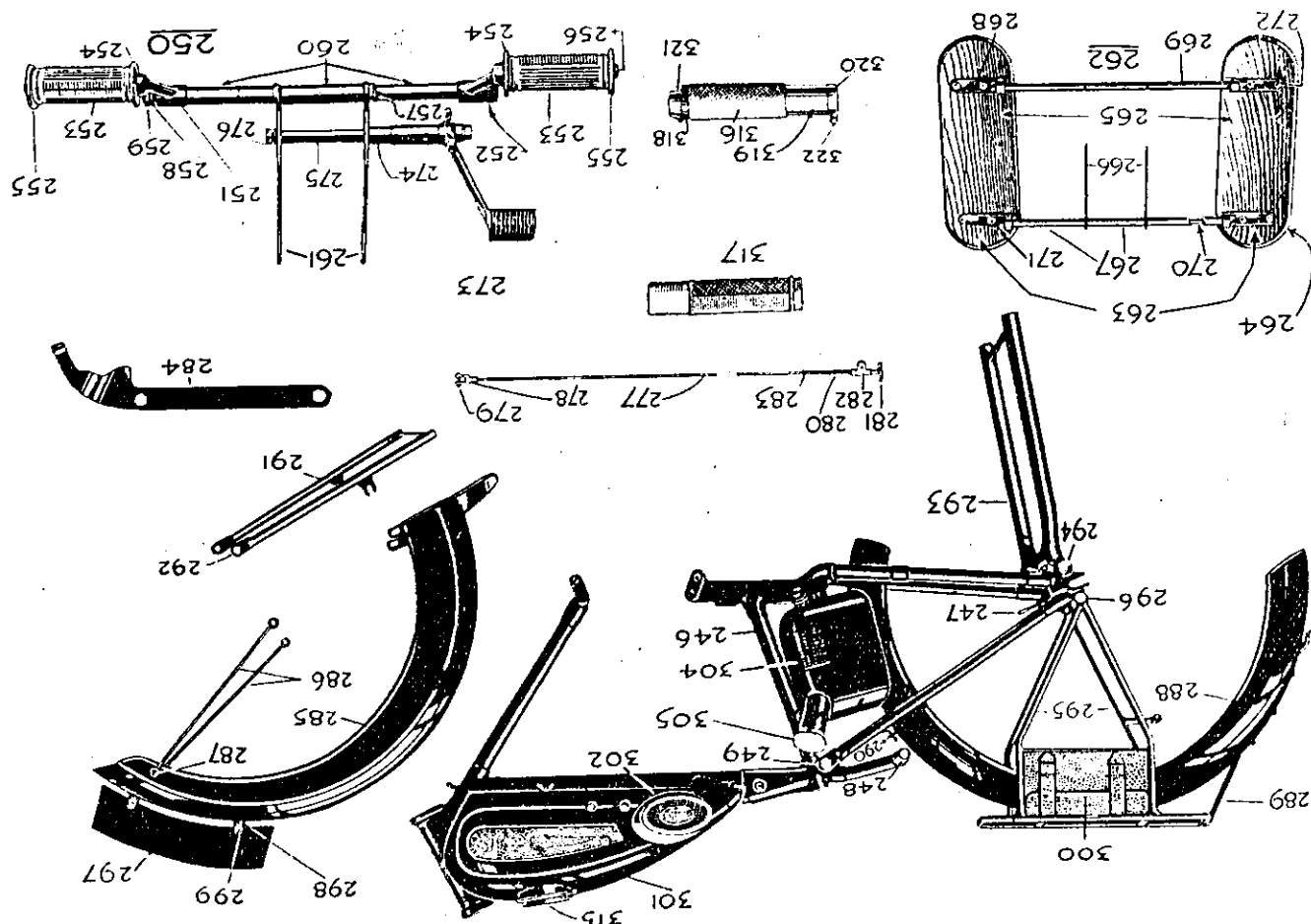
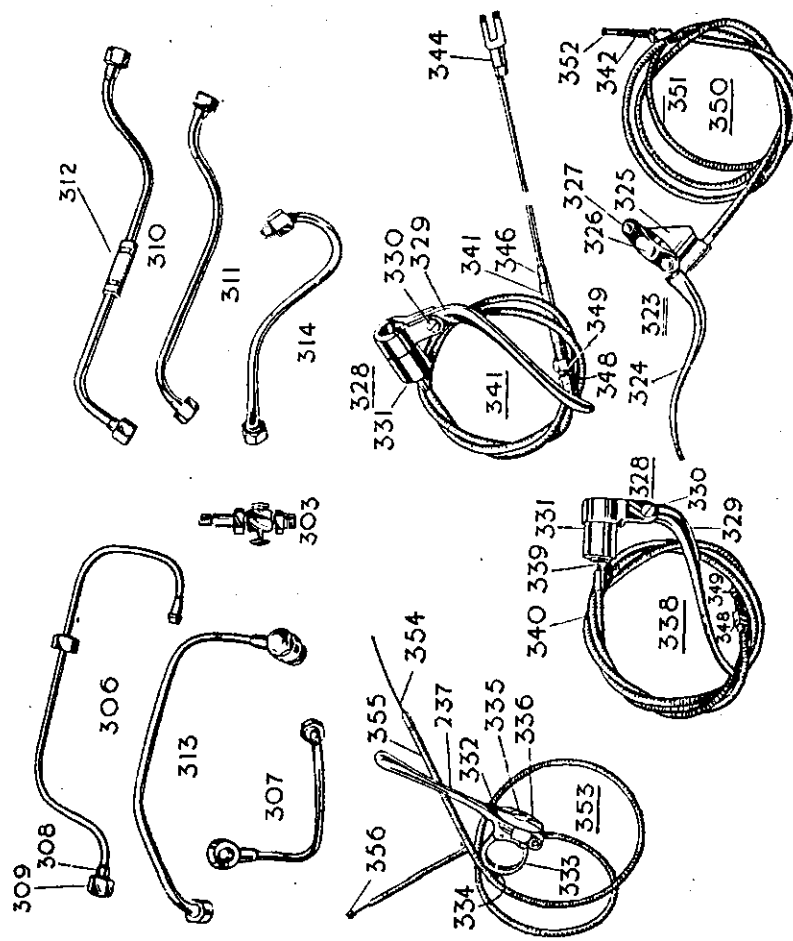
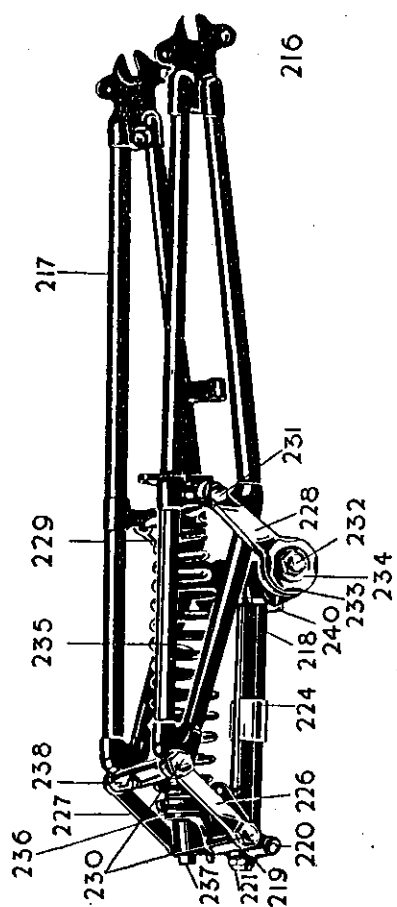
NOTE
When
Indicates models for which Part is suitable
occurs in more than one column in same line Part is interchangeable.

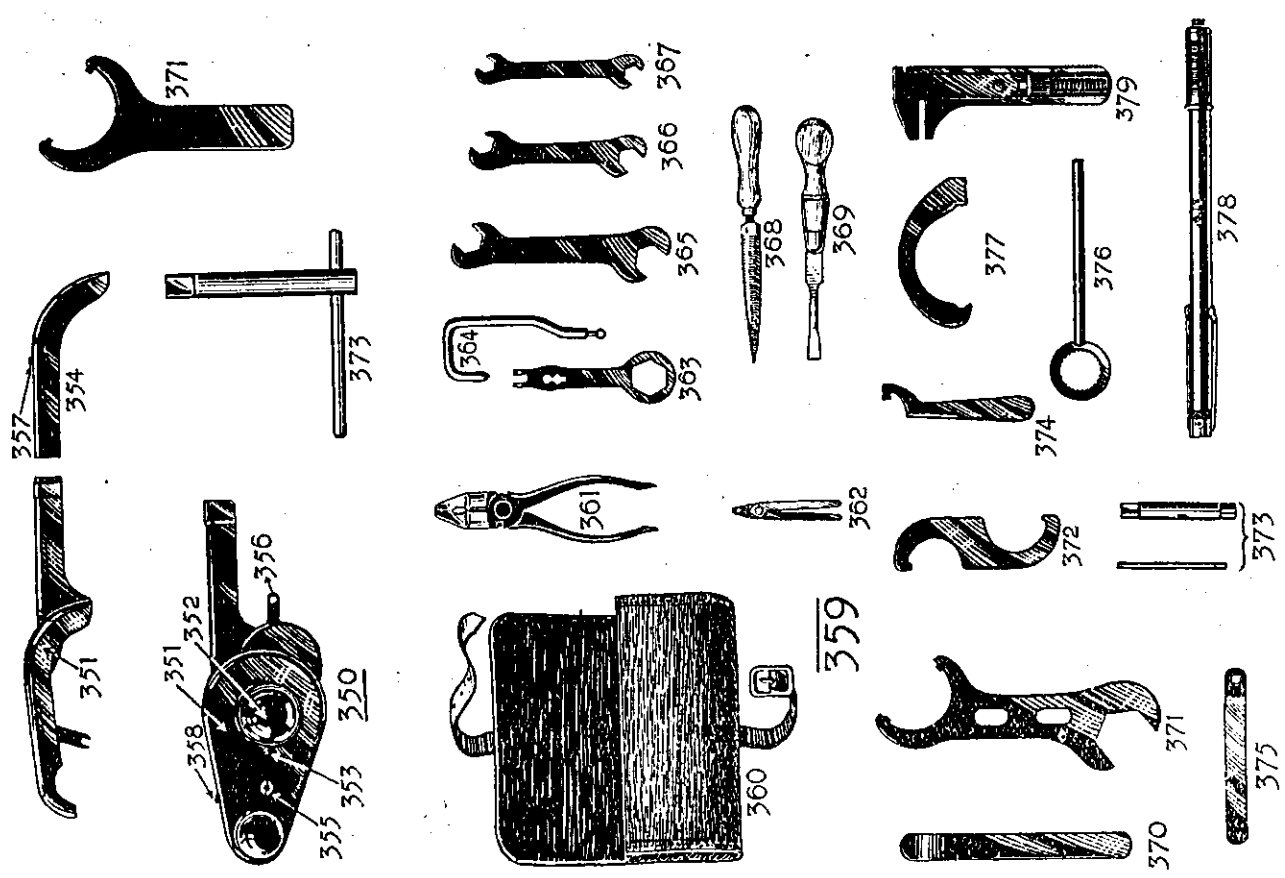
MODELS

MODELS









SCHEDULE CONTAINING LIMITED GUARANTEE.

We give the following guarantee with our spare parts for Motor Cycles, Motor Cycle Combinations, and Sidecars, which is given in place of any implied conditions, warranties or liabilities whatsoever, statutory or otherwise, all such implied conditions, warranties and liabilities being in all cases excluded. Any statement, description, conditions or representation contained in any catalogue, advertisement, leaflet, or other publication shall not be construed as enlarging, varying, or overriding this guarantee. In the case of machines which have been used for "hiring out" purposes, or from which the trade mark, name, or manufacturing number has been removed, no guarantee of any kind is given or is to be implied.

We guarantee subject to the conditions mentioned below, that all usual and reasonable precautions have been taken by us to secure excellence of materials and workmanship, but this guarantee is to extend and be in force for six months only from date of purchase, and damages for which we make ourselves responsible under this guarantee are limited to the replacement of any part which may have proved defective, and any work involved by us in the replacement of such part or parts will be charged for. We undertake, subject to the conditions mentioned below, to make good at any time within six months any defects in these respects. As spare parts for Motor Cycle or Motor Cycle Combinations are easily liable to derangement by neglect or misuse, this guarantee does not apply to defects caused by wear or tear, misuse or neglect.

The term "misuse" shall include, amongst others, the following acts:-

- (1) The attaching of a sidecar to the motor cycle in such a manner as to cause damage, or calculated to render the latter unsafe when ridden.
- (2) The use of a motor cycle or of a motor cycle and sidecar combined, when carrying more persons or a greater weight than that for which the machine was designed by the Manufacturers.
- (3) The attaching of a sidecar to a Motor Cycle by any form of attachment not provided or supplied by the Manufacturers or to a motor cycle which is not designed for such use.
- (4) The use of spare parts or replacement parts not supplied by us.

Machines used in races are not guaranteed, but should any trouble arise through or because of racing, we will deal with such cases on their merits.

Any Motor Cycle, Motor Cycle Combination or Sidecar sent to us to be plated, enamelled or repaired, will be repaired upon the following conditions, i.e., we guarantee that all precautions which are usual and reasonable have been taken by us to secure excellence of material and workmanship, such guarantee to extend and be in force for three months only from the time such work shall have been executed or until the expiration of the six months above referred to, and this guarantee is in lieu and in exclusion of any common law or statute, warranty or condition, and the damages recoverable are limited to the cost of any further work which may be necessary to amend and make good the work found to be defective.

CONDITIONS OF GUARANTEE.

If a defective part should be found in our spare parts for Motor Cycles, Motor Cycle Combinations or Sidecars, or in any part supplied by way of exchange before referred to, it must be sent to us CARRIAGE PAID and accompanied by an intimation from the Owner that he desires to have it repaired or exchanged free of charge under our guarantee, and he must also furnish us at the same time with the number of the Machine, the date of the purchase, or the date when the alleged defective part was exchanged, as the case may be.

Falling compliance with the above, such articles will lie AT THE RISK OF THE OWNER and this guarantee and any implied guarantee, warranty or condition shall not be enforceable.

We do not guarantee the specialities of other firms such as magnetos, carburettors, tyres, saddles, chains, lamps, etc., or any component parts supplied to the order of the Purchaser differing from our standard specifications supplied with the spare parts for our Motor Cycles, Motor Cycle Combinations, Sidecars, or otherwise.

NOTE--Tool No. 371 in Top Right Hand Corner is not now supplied